

STAND UP PADDLING 2018 COMPOSITE BOARDS

ADDICTED TO
RIDE



FANATIC



ARTHUR ARUTKIN, VICTOR FERNANDEZ, AIRTON COZZOLINO



OUR WAY OF LIFE IS FUELLED BY OUR ADDICTION TO RIDE. WE VALUE EACH SESSION, ADVENTURE AND DISCOVERY. BUT MORE THAN ANYTHING IT'S ALL ABOUT GIVING BACK TO YOU, OUR CUSTOMER THROUGH OUR PRODUCTS THAT WE DEVELOP AND CREATE EACH YEAR. OUR TEAM IS INVALUABLE AND EVERY YEAR WE ARE GREETED BY TECHNICAL KNOW-HOW AND FRESH PERSPECTIVES. OUR COMBINED EXPERIENCE FACILITATES THE BRAND AND ITS PRODUCTS TO EVOLVE WITHIN THE RANGE, OR CREATE NEW CONCEPTS MAKING SURE FANATIC KEEPS LEADING THE WAY IN OUR SPORT.

WE ARE FANATIC

Founded in 1981, our brand represents over three decades of history. Trailblazing through our innovation, design and CAD platform we're proud of the reputation we've achieved as one of the world's leading watersports brands. From our champion team riders and ambassadors, to our R&D and in-house design team, we're able to ensure only the best from Fanatic.

WHAT WE STAND FOR

We have an ecological responsibility and are dedicated to cleaner, greener ways of making new boards with our Ocean Minded spirit.

Our R&D is a continuous process. By testing in different locations around the world throughout the year, we are able to deliver boards that will feel right at home wherever you take them. Our dedication gives us the confidence to say that Fanatic boards are the most advanced on the market.

FOR 2018 ...

Those looking for adventure and discovery will be stoked with the new, performance orientated Rays and ladies will fall in love with the new Diamond Touring, a female specific version of the ever popular Ray. Both designs are super-efficient delivering effortless glide and stability. With the same inspiring performance, going the distance has never been so easy.

Our new Foil program opens up a whole new world of riding waves. The Stubby Foil Edition adds another dimension to an already versatile board and transforms into your multi-sports tool for Wave SUP, SUP-Foiling and Windsurf-Foiling.

Believing that everyone should have the opportunity to enjoy this exhilarating ride, we've developed our accessible, affordable and highly durable Flow S1 Foil. Catch barely breaking swell or fly over slower sections with power and speed.



WAVE

For 2018 our wave line is major! Unleash the daredevil within, and get ready for the ride of your life! Our ProWave range is made up of 4 refined powerhouse shapes ranging from 7'6" to 9'2". Radical, ambitious and shining with surf style, the ProWave line represents the best in waveriding.

For a fluid and fuss-free ride, delve deep into our AllWave range. The wider compact outline concept makes this line smooth, stable and all-inclusive, without being too extreme. The wide range of characteristics means that the AllWave is just as happy playing in the white waters, as it is cruising the clean overhead walls.

Up the fun with the Stubby line, designed for you to get creative. Get loose and stay deep in the pocket with heaps of control and flow. The compact parallel rail concept and surfy rocker line ensures a slushy, snappy surfstyle. Four sizes ranging from 7'10" to 8'10" all have excellent wave catching abilities, stability and speed. The Stubby is a must for every quiver. The Stubby Foil Edition adds another dimension to an already versatile board.

Get creative with your ride with our Stylemaster! If you're into classic style Longboard surfing, these three shapes offer all that smooth flow you're looking for.



PROWAVE LTD, STUBBY LTD, STUBBY FOIL EDITION, ALLWAVE, STYLEMASTER
MORE INFORMATION ON PAGE 28 - 38



ALL-ROUND

For 2018, the All-round range is looking super fly! Designed with everyone in mind, it's the obvious choice for easy wave catching, or those first steps on a confidence-boosting platform. Available in multiple sizes and constructions our Fly's are playful, durable and lightweight. From adults to the enthusiastic groms, these boards are made to make magic.

The Diamond is the ultimate complement to our successful Fly range in a stylish look.



FLY, DIAMOND PURE
 MORE INFORMATION ON PAGE 42 - 46

ALICE ARUTKIN, VICTOR FERNANDEZ, KLAAS VOGET, MARÍA ANDRÉS

TOURING

Get set for your next expedition with our Touring range. New and improved for 2018 is our Ray line. Represented by two premium and performance orientated designs, the 12'6" and 14'0" sizes share the super manoeuvrable width of 29.5".

Exceptionally efficient with minimal input, enjoy the endless glide and comfort of our LTD Wood edition and Pure Light construction.

Ladies, are you ready to go the distance? This year we've introduced the Diamond Touring into the composite range. At 11'6" x 29" the Diamond Touring is a slightly smaller, female specific version of the ever popular Ray, but with the same inspiring performance. It's your time to shine.



RAY, DIAMOND PURE TOURING
MORE INFORMATION ON PAGE 50, 52

PAULINA HERPEL, KAI-NICOLAS STEIMER



RACE

For fast and efficient race performance, the 2018 Falcon range will convert your paddle input into supercharged glide leaving the rest of the fleet in your wake. An innovative and adaptive style makes this design responsive underfoot and unfazed by uneasy waters. Acceleration is enhanced by the Custom Carbon Sandwich Light Finish constructions with three unique widths of 24.75", 26.75" and 28.75".

For Flatwater racing the Strike ensures you lead the pack with incredible efficiency. Joining the Strike family is our new lightning fast Strike 21.5" – by far our fastest SUP board yet!



FALCON, STRIKE
 MORE INFORMATION ON PAGE 56, 58

NEW FOR 2018



DIAMOND PURE TOURING (11'6")

A slightly smaller ladies version of our Ray. Heaps of performance with effortless glide packed in sweet style!

- › Gentle ladies cruiser
- › Stable and with graceful glide
- › Effortless distance



RAY LTD RAY PURE (12'6" / 14'0")

The totally redesigned Ray offers the ultimate touring experience!

- › Stable and efficient glide
- › Effortless distance
- › Uninterrupted paddle stroke
- › Dry and stable ride



THE FASTEST STRIKE YET! (14'0" × 21.5")

Zero compromise flat water racing

- › Deep recess for low point of gravity and maximum stability
- › Incredibly fast and efficient



STUBBY LTD (7'10" / 8'3" / 8'7" / 8'10")

The new generation of our parallel rail design combines stability and ease of use with speed, flow and radical hacks

- › Compact parallel rails concept
- › Reduced swing weight
- › Stable and balanced paddling
- › Quick acceleration
- › Controlled lines
- › Slashy snappy surf style



FOIL FLOW S1

Our Flow S1 Wave Floil opens up a whole new world of riding waves. Catch barely breaking swell or fly over slower sections with power and speed

- › Accessible and stable ride
- › Highly durable premium quality
- › Value-minded

STUBBY FOIL EDITION (7'10" / 8'7")

Fly above any ripple or dig your rails deep in a clean wall – you decide on the setup you ride

- › Foil surfing and standard wave SUP use
- › Same performance features of our Stubby LTD
- › Adjustable system for a variety of foils
- › Greatest multi-sports range with additional inserts for wind foiling

OTHER NEW PRODUCTS

Stylemaster LTD/PURE 10'6" × 31":
Longboard style for the stronger rider

Paddle Carbon 25 HD:
Versatile, strong and great value for money

Paddle Ripper Carbon 25:
Light, stiff and durable kids paddle

MEET THE TEAM



SEBASTIAN WENZEL



»SUP IS STILL THE FASTEST GROWING WATERSPORT IN THE WORLD, AS WELL THE MOST ACCESSIBLE WAY TO RIDE WAVES, EXPLORE INLAND LAKES, EVEN CROSS THE ATLANTIC OCEAN. PROUD OF OUR 36 YEARS OF BOARDRIDING HERITAGE, I'VE ENJOYED WATCHING THIS SPORT GROW AND DEVELOP WITH OUR PIONEER SHAPES AND TECHNOLOGIES, ALL OF WHICH HAVE ADDED TO THE DIVERSITY OF THE SPORT TODAY. COMMITTING TO THE CHALLENGE OF SUSTAINABILITY, OUR OCEAN MINDED CULTURE ENSURES MINIMAL IMPACT ON OUR ENVIRONMENT.«

BRAND MANAGER – CRAIG GERTENBACH

As Brand and Sales Manager for Fanatic, Craig divides his time between testing, sales, team management and boardbag packer at photoshoots.



HEAD OF MARKETING – KARIN GERTENBACH

Karin is the Head of Marketing for Fanatic. Having joined the brand back in 1999, she has evolved and worked hard to grow its image as much as she can. Married to Brand Manager Craig, and with two kids who love Stand Up Paddling too, she lives the job 24/7 and is truly »Addicted to Ride!«



HEAD OF WAVE R&D & MARKETING MANAGER – KLAAS VOGET

Top 10 PWA competitor and SUP soul-rider Klaas Voget spends as much time possible on the water. Having signed his first rider contract with Fanatic back in 1999, he got involved in the R&D in 2005. In 2007, Klaas became a full time pro rider dedicating his passion for Windsurfing and SUP to the brand, in 2015 he became Marketing Manager.



SHAPER – SEBASTIAN WENZEL

Sebastian Wenzel has been shaping boards since the early eighties. Filling the role of designer and shaper for Fanatic back in 1994, he introduced the premium CAD design process into windsurfing in 2004, our very first SUP's also benefitting greatly from this technology. His creative eye and passion for the sport makes him a fundamental part of the progression and evolution of our lines, and the SUP sport in general.



PRODUCT MANAGER – DANIEL AEBERLI

Daniel Aeberli has been »Addicted to Ride« since he was 7 years old. As Fanatic Product Manager, Daniel pursued his love of watersports by getting involved in the R&D and technical development of Windsurfing with Fanatic. Now, Stand Up Paddling and the creation of new products have become another passion of his, absorbed into both his work and lifestyle.



INTERNATIONAL TEAM



ITA
AIRTON COZZOLINO



FRA
ARTHUR ARUTKIN



AUS
KAI BATES



GER
KAI-NICOLAS STEIMER



GER
PAULINA HERPEL



GER
VALENTIN ILLICHMANN



ESP
MARÍA ANDRÉS



FRA
ALICE ARUTKIN



FRA
RAPHAËL RAF FILIPPI



ITA
DAVIDE IONICO



FRA
FRED BONNEF



FRA
SARAH HÉBERT



DEN
CHRISTIAN ANDERSEN



ESP
VICTOR FERNANDEZ



USA
COLLEEN CARROLL



GER
KLAAS VOGET

ARTHUR ARUTKIN, AIRTON COZZOLINO



CAD SHAPING

The CAD platform enables us to store every board built since 2004 on a digital database so we can evolve, push boundaries and innovate, rather than recreate. Sebastian Wenzel is a key player in the creation of Fanatic boards. With over a decade of experience in CAD shaping, his experience as a waterman, teamed with his ability to process and implement rider feedback has seen him bring great concepts to life.

OCEAN MINDED

OCEAN MINDED

On every Fanatic board you'll find our Ocean Minded logo. A symbol that represents our ethos of ›protect what you love‹, we pride ourselves on being an environmentally aware brand and strive to be as proactive as possible when creating cleaner, greener products that will last for a lifetime. The search for improvement in protecting our environment never stops as we implement ethically sourced and raw materials where possible, along with constantly reevaluating our packaging and distribution network to ensure an eco-friendly future for our brand and the sports that we represent.

KEEP IT GREEN

Each year as our ranges evolve and we continue to create new products, our primary focus is to proactively reduce the ecological impact our processes have on the environment. We believe that we have a responsibility to Mother Nature, because without it the sports that we are so passionate about would not be, as we know them today. Through advancements in our construction techniques significant gains have been made, such as the use of ozone-free foam cores, resins vs spray paint, smart packaging and audited facilities.



OZONE-FREE FOAM BLANKS



LESS PAINT MORE PICTURESQUE



PACKAGE SMART



AUDITED FACILITIES FOR HEALTHIER WORKERS

TECHNOLOGY 2018



BXF BIAx FIBRE FULL PVC SANDWICH LIGHT FINISH TECHNOLOGY

PROWAVE LTD, STUBBY LTD, STUBBY FOIL ALLWAVE LTD

- 1 Light finish and weight saving graphics
- 2 90° fibre layer
- 3 45° Biax fibre layer
- 4 Glass rail reinforcement
- 5 Extra strong bamboo patch (stance area)
- 6 Biax glass stance area force patch
- 7 High density PVC sandwich core
- 8 Ultra light fibre layer
- 9 Super light EPS core

Biax Glass fibre is a strong and super light layup. Perfectly suited to all our ProWave LTD, Stubby LTD, Stubby Foil and AllWave LTD models, the Biax weaving is a light and impact resistant material. When combined with a single PVC Sandwich and Wood/Biax heel reinforcements, it guarantees the most efficient construction in terms of weight and performance.



CCS CUSTOM CARBON SANDWICH LIGHT FINISH TECHNOLOGY

FALCON, STRIKE

- 1 Light finish and weight saving graphics
- 2 Ultra light glass layer
- 3 Full Carbon Innegra layer
- 4 Carbon rail reinforcement band
- 5 Carbon stance force patch
- 6 High density PVC sandwich core (stance/step area)
- 7 Carbon stance reinforcement patch
- 8 Ultra light fibre layer
- 9 Super light CNC EPS core

Carbon Innegra is a high-end technology with perfectly balanced weight, strength and impact resistant characteristics. Carbon rail sections and a complete Hi-tech Carbon bottom layer deliver an impeccable weight/stiffness ratio. With a fantastic dynamic flex due to its very fine weave, it is used for all Falcon and Strike models.



CBS CUSTOM BAMBOO SANDWICH LIGHT FINISH TECHNOLOGY

STYLEMASTER LTD, FLY LTD, RAY LTD

- 1 Light finish and weight saving graphics
- 2 Glass reinforcement rail band
- 3 Glass fibre layer
- 4 Caramel Bamboo Sandwich core (front half)
- 5 Glass reinforcement layer
- 6 Extra light PVC Sandwich
- 7 Glass fibre layer
- 8 Super light EPS core

A lightweight PVC and wood/glass composite construction ensures a great strength to weight ratio. Combined with some extra glass reinforcements, it absorbs high impact forces. Overall it's a very durable layup, with a lightweight and unique wooden deck optic.



PURE LIGHT TECHNOLOGY

ALLWAVE PURE, STYLEMASTER PURE, FLY PURE,
DIAMOND PURE, RAY PURE, DIAMOND PURE TOURING

- 1 Single Skin top coat
- 2 Glass reinforcement rail band
- 3 Glass fibre layer
- 4 Glass reinforcement layer
- 5 Extra strong wood patch (stance area)
- 6 Extra solid glass layer
- 7 Glass fibre layer
- 8 Super light EPS core

The Pure Light technology is an exceptionally durable and featherweight construction. Created for frequent use, the glass reinforcements ensure optimum stiffness. A thick, durable outer skin gives the board's hull great strength, as well as extra ding and impact resistance.



SOFT TOP HRS SOFT TOP TECHNOLOGY

FLY SOFT TOP

- 1 Impact-bumpers nosetail
- 2 Shock absorbing Soft Top shell with microdot-structure
- 3 Glass HRS layer
- 4 Extra strong wood patch (stance area)
- 5 Extra solid glass layer
- 6 Strong and light high density EPS core

The High Resistance Soft Top technology is a lightweight and durable construction for everyday use. Strategic use of glass reinforcements ensure adequate stiffness, while a strong, thick outer skin gives the board's hull phenomenal strength. With extra ding and impact resistance, it is used on the Fly Soft Top giving a user-friendly soft deck.

THE STUBBY CONCEPT

INTERVIEW WITH SHAPER
SEBASTIAN WENZEL



The 2018 Stubby is fresh, full of flow and represents the new generation of our parallel rail design. Compact and easy to use, we catch up with designer Sebastian Wenzel to find out more.

Hi Sebastian, please can you give us a general overview of the Stubby and it's new design features for 2018?
The design of the Stubby is a little narrower, slightly shorter and with a parallel outline. This combination of features is perfect for generating speed and projection. Following the huge success of the Stubby's predecessor, we took the base design and changed some key design features that have had a positive impact on the overall performance of the 2018 model. The first things of note are the wingers in the tail that draw in the outline to reduce the surface area and lift in the tail. We then combined that with some V in the tail, which makes the new Stubby quite a bit looser. This generates a more reactive feel underfoot and allows for tighter turns and carving. We've also updated the nose outline to give it a very clean harmonic shape.

What conditions is the Stubby happiest in and how far can it be pushed?

Generally the Stubby makes average conditions feel way better than they are, due to the higher speed and drive it offers, but it can be pushed in all kinds of conditions. It's easy to paddle, catches waves early and is fast. It generates a lot of speed and when the waves get bigger it holds the rail nicely in the wall. Due to the parallel outline concept the Stubby is very predictable and easy to keep in line. This control allows you to focus on the wave and not worry about the board. The even distribution of volume makes the Stubby super stable and balanced, which helps a lot when the conditions are sloppy. The bottom curve/scoop rocker line and bottom shape of the Stubby are major contributing factors to the overall control of the board. This combination guarantees catching the wave early and adds drive and lots of grip throughout the turns.

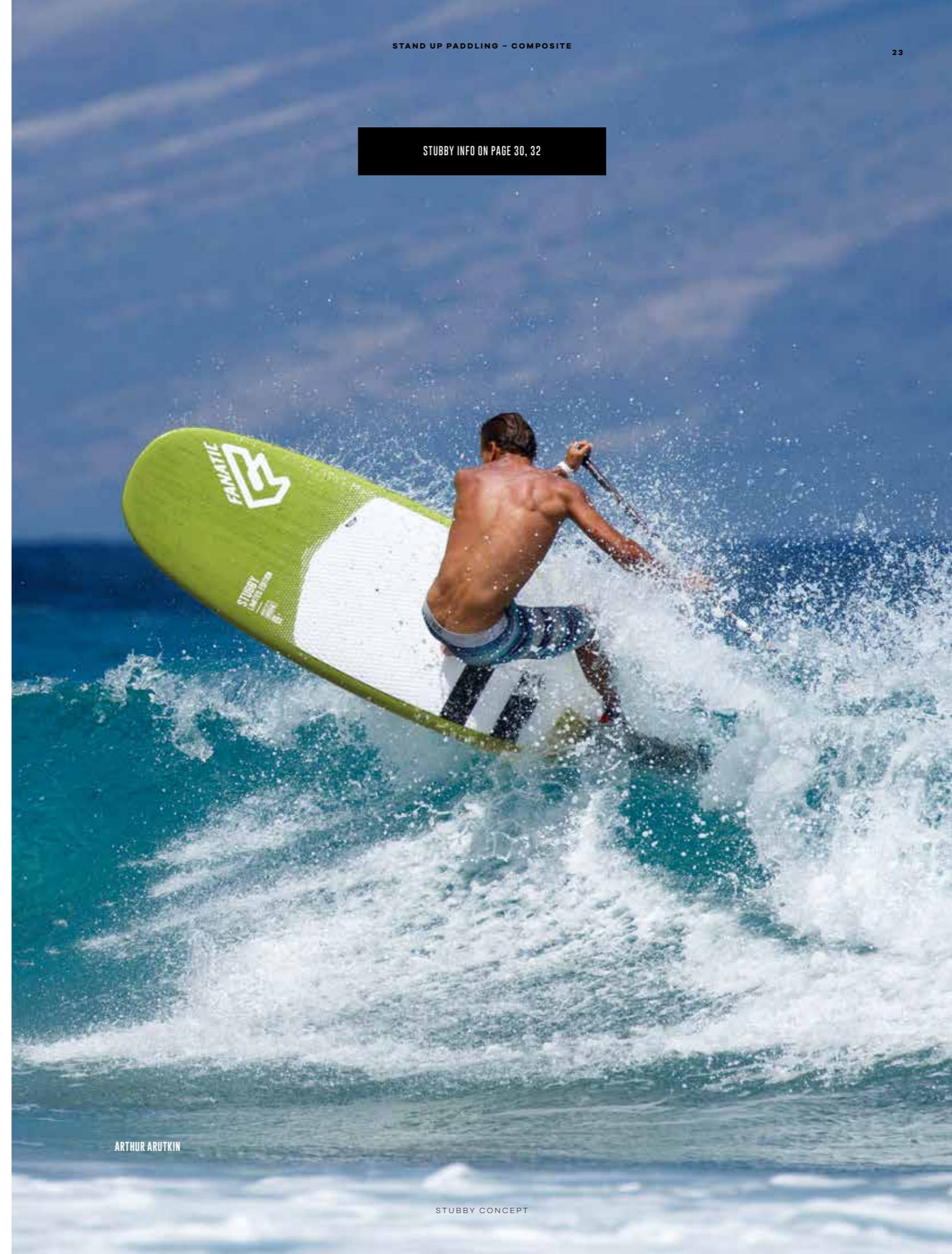
How's the Stubby built?

The Stubby features a full EPS PVC sandwich construction, combined with a specially designed Biax Fibre layup and Epoxy resin. This construction is the perfect blend for light weight, durability and flex performance, same construction we are using in our ProWave and AllWave LTD.

Which type of rider will enjoy the Stubby?

The Stubby is not a board for wave beginners. But once you've got a little bit of experience the Stubby will take you to the next level and definitely improve your skill set. This shape performs phenomenally well at any level and will accompany you through your entire wave SUP life and experiences. It's a performance board, which is way less technical to ride and easier to paddle than our performance ProWave shapes.

STUBBY INFO ON PAGE 30, 32



ARTHUR ARUTKIN

DREAM BIG SHINE BRIGHT

» I'd say that SUP has definitely connected me with the ocean in a deeper and more complete way. «

MARÍA ANDRÉS



ALICE ARUTKIN, MARÍA ANDRÉS, BEA SANCHEZ DIAZ

Over the years, SUP has given an exciting new lease of life to people of all ages worldwide. Through learning a new sport, embracing new trends or straight up shredding, there's no doubt that this sport-for-all creates a sense of empowerment, motivation and strength. The female community has been making a serious impression on the industry, taking to the ocean, charging waves, leading the »workout on water« trend and winning races across the globe.

As a brand we embrace the stoke and demands that our customers want from our products, and endeavour to further fuel the passion. Working hard to create the most inclusive and progressive women specific boards, our line of Diamonds are designed to cover all styles and demands of the female rider.

International Team Rider Alice Arutkin has been paving the way for female riders and style on the water for years. Her passion for SUP comes in many forms and we're sure her words will spark some excitement in you too!

»To me SUP means playtime! As a sport it's incredibly unifying and non-elitist. It's easy, accessible, fun and open to everyone from Pro athletes to amateurs. The Diamond Touring is the best board for those who want to take a

trip. Pack your drinks and snacks, and you're set for an expedition. The Diamond is my daily paddle and the one I personally love to ride everyday. It allows me to cruise, train and ride some cool waves. The Diamond Air is practical, light and user-friendly. The super comfy backpack will complement your adventures and make travelling easy.«

Fanatic Team Rider and inspiring water-woman María Andrés, has found her own special connection with SUP and is constantly surprised with each experience it gives her.

»SUP has changed the way I enjoy the ocean. As a windsurfer and surfer I've always played in rougher environments, which I love! But in the past, there were long periods of time where the conditions didn't deliver and I couldn't go riding. Since discovering SUP, I get to enjoy the peacefulness of being out on the ocean on those beautiful calm days, and paddling is a seriously good workout! I like to cruise around, see the coastline from a different perspective and get closer to marine life, even whales! It doesn't take long to gain confidence on a SUP and now when the waves are big I don't hold back. It's also super fun to take a bigger board when the waves are tiny and get out there. Between windsurfing and SUP I get on the water 365 days of the year. What more can a girl want?«

A N Y W A V E



A N Y W A Y

VICTOR FERNANDEZ

PROWAVE LTD RADICAL WAVE

ART. NO.: 13800-1101

WHETHER YOU'RE GOING FOR FAST CARVES IN POWERFUL REEF BREAKS, RADICAL HACKS IN SLOPPY BEACH BREAKS OR CHARGING MASSIVE SURF, WE'RE SURE THERE'S A RIDE FOR YOU IN OUR HIGH PERFORMANCE PROWAVE LINE.

The four ProWave shapes are based around the needs of our International team riders who are pushing the boundaries of powerful surfing performance with these models. Balanced and easy to paddle, yet super radical once unleashed onto a wave, they offer a responsive ride with quick acceleration, great speeds and lots of drive. The ProWave is designed for deep carves and tight arcs in the pocket whilst handling mushy days with ease. The controlled flow gives you the confidence and comfort even on the biggest days. It comes with five boxes to give you the choice of either a Quad or Thruster fin setup allowing you to adapt the board to your style of riding and conditions on the day.

KEY FEATURES

- > Real surf scoop rocker line
- > Nose outline and squash tail provide Shortboard performance
- > Maximum carving delivered via pulled down thin rails
- > Hard release edges in the tail for direct acceleration and light feel, with softer rails in the nose for smooth surfing
- > Maximum stability delivered via slightly domed deck blending into thin rails
- > Speed and drive enhanced via single concave entry that transitions into a single double concave mid section
- > Bottom and rail shape provides ultimate grip allowing for smaller fins
- > Prevention of nose diving provided via added nose kick
- > Five Multi-Boxes for Quad/Thruster fin setup option
- > Mastfoot insert for windsurfing option



ARTHUR ARUTKIN

- > POWERFUL PERFORMANCE
- > SURF STYLE
- > FAST CARVES
- > SNAPPY AND GRIPPY TURNS



PROWAVE LTD	7'8"	8'2"	8'8"	9'2"
VOLUME	80L	100L	110L	127L
WIDTH	27.5" / 69.9 CM	28.5" / 72.4 CM	28.5" / 74.8 CM	30.5" / 77.5 CM
LENGTH	7'8" / 238.6 CM	8'2" / 248.9 CM	8'8" / 264.2 CM	9'2" / 279.4 CM
TECHNOLOGY	BAF - BIAx FIBRE / FULL PVC SANDWICH	BAF - BIAx FIBRE / FULL PVC SANDWICH	BAF - BIAx FIBRE / FULL PVC SANDWICH	BAF - BIAx FIBRE / FULL PVC SANDWICH
FIN BOXES	5 - MULTI-BOX	5 - MULTI-BOX	5 - MULTI-BOX	5 - MULTI-BOX
FINs	3 - 4.75" HONEYCOMB RTM	3 - 4.75" HONEYCOMB RTM	3 - 4.75" HONEYCOMB RTM	3 - 4.75" HONEYCOMB RTM

STUBBY LTD

WAVE

ART. NO.: 13800-1100

THE NEW GENERATION OF OUR PARALLEL RAIL DESIGN COMBINES STABILITY AND EASE OF USE WITH SPEED, FLOW AND RADICAL HACKS. THE 2018 STUBBY WILL GIVE YOU THE CONFIDENCE TO APPROACH THE WAVE IN A TOTALLY DIFFERENT WAY.

Short in length, the Stubby has a less curved rail line for maximum hold on the wave and through the turns. The super wide nose gives extra stability and easy wave catching, allowing you to ride with less volume and a narrower centre. A surfy rocker line and the new winger swallowtail add looseness to stay right in the pocket with heaps of control and flow. Our high performance compact surf concept comes in four sizes ranging from 7'10" to 8'10". You'll be blown away by the stability, speed and reactions, especially when the waves are less than perfect.

KEY FEATURES

- › Straighter, more parallel outline for a cleaner waterline and reduced drag
- › Short and wide ›Stubby-Nose,‹ for maximum stability, reduced swing weight, fast change of direction and easy recovery
- › Winger swallow tail for ultimate turning response, grip and control
- › Pulled down thin performance rails for maximum carving
- › Hard release edges in the tail for direct acceleration and a light feel
- › Soft rails in the nose for smooth surfing
- › Lightly domed deck for maximum stability, blending seamlessly into the thin rails
- › Single concave entry, transitioning into a single/double concave mid section into a V/double concave through to the tail providing drive and super fast reactions off the tail
- › Quad/Thruster fin setup option with 5 multi boxes
- › Mastfoot insert for windsurfing option



AIRTON COZZOLINO

- › COMPACT PARALLEL RAILS CONCEPT
- › REDUCED SWING WEIGHT
- › STABLE AND BALANCED PADDLING
- › QUICK ACCELERATION
- › CONTROLLED LINES
- › SLASHY SNAPPY SURF STYLE



STUBBY LTD	7'10"	8'3"	8'7"	8'10"
VOLUME	35L	105L	120L	135L
WIDTH	28.5" / 72.4CM	28.75" / 73CM	29.25" / 74.3CM	30.5" / 77.5CM
LENGTH	7'10" / 213.8CM	8'3" / 251.5CM	8'7" / 261.6CM	8'10" / 268.2CM
TECHNOLOGY	BXF - BIAx FIBRE / FULL PVC SANDWICH	BXF - BIAx FIBRE / FULL PVC SANDWICH	BXF - BIAx FIBRE / FULL PVC SANDWICH	BXF - BIAx FIBRE / FULL PVC SANDWICH
FIN BOXES	5 - MULTI-BOX	5 - MULTI-BOX	5 - MULTI-BOX	5 - MULTI-BOX
FINS	3 - 5" HONEYCOMB RTM	3 - 5" HONEYCOMB RTM	3 - 5" HONEYCOMB RTM	3 - 5" HONEYCOMB RTM

STUBBY FOIL EDITION

FOIL SURFING

ART. NO.: 13800-1116

THE NEW STUBBY FOIL EDITION ADDS ANOTHER DIMENSION TO OUR PARALLEL RAIL SHAPE. FLY ABOVE ANY RIPPLE OR DIG YOUR RAILS DEEP IN A CLEAN WALL – YOU DECIDE ON THE SETUP YOU RIDE.

Our Stubby Foil Edition comes in the same shape as our Stubby LTD and offers the same easy and controlled flow if you decide to ride your regular Thruster fins.

Once you change to Foil, our Stubby Foil Edition – available in 7'10" and 8'7" – creates a whole new dynamic. Catch waves of any size way before they hit the reef and ride them with new lines and a totally different approach. Our adjustable system with two longer tracks allows the use of different foils and finding their individual sweet spot. Additionally we equipped the Stubby Foil with strap inserts for optional Windsurf-Foiling. The greatest variety of multisport-use combined in one package.

KEY FEATURES

- › Two longer US base tracks adjustable for different style of Foils
- › Mastfoot insert and strap inserts for windsurfing/ Windsurf-Foiling
- › Straighter, more parallel outline for a cleaner waterline/ reduced drag
- › Short and wide ›Stubby-Nose‹ for maximum stability, reduced swing weight, fast change of direction and easy recovery
- › Winger swallow tail for the ultimate turning response/ grip/ control
- › Pulled down thin performance-rails for maximum carving
- › Hard release edges in the tail for direct acceleration and a light feel
- › Soft rails in the nose for smooth surfing
- › Lightly domed deck for maximum stability
- › Single concave entry, transitioning into a single/ double concave mid section into a V/ double concave through to the tail providing drive and super fast reactions off the tail
- › Thruster fin setup with 3 multi boxes



AIRTON COZZOLINO

- › FOIL SURFING AND STANDARD WAVE SUP USE
- › SAME PERFORMANCE FEATURES OF OUR STUBBY LTD
- › ADJUSTABLE SYSTEM FOR A VARIETY OF FOILS
- › GREATEST MULTI-SPORTS RANGE WITH ADDITIONAL INSERTS FOR WINDSURF-FOILING



8'7"
120L
29.25" / 74.3 CM
8'7" / 261.6 CM
BXF – BAX FBRE/ FULL PVC SANDWICH
3 * MULTI-BOX, 2 * MAST TRACK FOR FOIL
3 * 5" HONEYCOMB RTM

7'10"
95L
28.5" / 72.4 CM
7'10" / 238.8 CM
BXF – BAX FBRE/ FULL PVC SANDWICH
3 * MULTI-BOX, 2 * MAST TRACK FOR FOIL
3 * 5" HONEYCOMB RTM

STUBBY FOIL EDITION
VOLUME
WIDTH
LENGTH
TECHNOLOGY
FINBOXES
FINS

FLOW S1 FOIL SURFING

ART. NO.: 13800-3511

OUR SUP WAVE FOIL FLOW S1 OPENS UP A WHOLE NEW WORLD OF RIDING WAVES. CATCH BARELY BREAKING SWELL OR FLY OVER SLOWER SECTIONS WITH POWER AND SPEED – THE S1 OUTPERFORMS THE CONDITIONS EVERY TIME.

SUP foiling requires a certain skill level, so our main objective was to make the S1 as accessible and easy to ride as possible. A large front wing, with a thick profile, adds stiffness and is the key for lifting power at low speeds in smaller surf. The anhedral wing tips help with roll stability and control, preventing wing tip ventilation during turns. Combined with a perfectly trimmed back wing design, we were able to develop a foil which remains easy, yet has great manoeuvrability, speed and control.

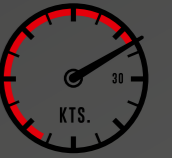
With a high specification aluminium mast, it's strong and extra stable with a solid 4 screw connection piece adjustable to the best possible position on your board. Taking durability to the next level, the back wing and fuselage of our Flow S1 are made from Carbon Compound, whilst the front wing is a lightweight yet durable Carbon Composite part.

Believing that everyone should have the opportunity to enjoy this exhilarating ride, our Flow S1 Foil is easy to use, premium quality and great value for money.



AIRTON COZZOLINO

EXTRAORDINARY SPEEDRANGE



SOLID INDUSTRY-STANDARD 4 SCREW CONNECTION PIECE, ADJUSTABLE TO THE BEST POSSIBLE POSITION ON YOUR BOARD.

FORMULA 1 FUSION TECHNOLOGY

MAST: MADE IN GERMANY

TILT STABILITY

CARBON COMPOUND BACK WING AND FUSELAGE



POLYGON SCREW LOCK INSERTS

CARBON COMPOSITE FRONT WING

ANHEDRAL WING TIPS HELP WITH ROLL STABILITY AND CONTROL

ALLWAVE WAVE

ART. NO.: 13800-1103 (LTD), 13700-1102 (PURE)

WHEREVER YOU DECIDE TO TAKE IT, THE ALLWAVE DELIVERS EASY-PEASY SURFING ACTION WITH SURPRISINGLY RADICAL PERFORMANCE ATTRIBUTES. AVAILABLE IN FOUR SIZES – FROM THE SNAPPY 8'9" TO THE FLOATY 9'8" – WE GUARANTEE UNBEATABLE FUN IN ALL TYPES OF WAVES.

The 2018 AllWave range ensures the easiest possible entry into the waves. The fast rocker line and stable stance offer straightforward wave catching characteristics and good speed, allowing you to focus 100% on the wave. The four sizes increase in length – with minimal additional width – to guarantee a smooth flow all the way through the models for the heavier riders. Whether conditions are choppy, small and testing, or clean overhead walls, the AllWave is the perfect tool for enjoyment, ease and progression.

KEY FEATURES

- › Wide and compact outline for an easy, balanced stance when paddling and surfing
- › Maximum carving via the pulled down thin rails
- › Hard release edges in the tail for direct acceleration and a light feel, with softer rails in the nose for smooth surfing
- › Lightly domed deck for maximum stability blending seamlessly into the thin rails
- › Single concave entry, blending into a double concave V for extra planning power, control and easy rail to rail turning
- › Bottom and rail shape provide ultimate grip allowing for smaller fins
- › Quad / Thruster fin setup with five boxes in all LTD versions, Thruster in Pure Light models
- › Mastfoot insert for windsurfing option

- › WIDE AND STABLE
- › FUSS-FREE PADDLING AND WAVE CATCHING
- › EASY AND TIGHT TURNING
- › SUITABLE FOR ALL TYPES OF WAVES



ALLWAVE LTD / ALLWAVE PURE	8'9"	9'0"	9'4"	9'8"
VOLUME	148L	158L	178L	187L
WIDTH	32" / 81.3 CM	32" / 81.3 CM	33" / 83.8 CM	33" / 83.8 CM
LENGTH	8'9" / 266.7 CM	9'0" / 274.3 CM	9'4" / 284.5 CM	9'8" / 294.5 CM
ALLWAVE LTD TECHNOLOGY	DXF - B1AX FIBRE / FULL PVC SANDWICH	DXF - B1AX FIBRE / FULL PVC SANDWICH	DXF - B1AX FIBRE / FULL PVC SANDWICH	DXF - B1AX FIBRE / FULL PVC SANDWICH
ALLWAVE PURE TECHNOLOGY	PURE LIGHT	PURE LIGHT	PURE LIGHT	PURE LIGHT
ALLWAVE LTD FINBOXES	5 • MULTI-BOX	5 • MULTI-BOX	5 • MULTI-BOX	5 • MULTI-BOX
ALLWAVE PURE FINBOXES	3 • MULTI-BOX	3 • MULTI-BOX	3 • MULTI-BOX	3 • MULTI-BOX
FINS	3 • 5" HONEYCOMB RTM	3 • 5" HONEYCOMB RTM	3 • 5" HONEYCOMB RTM	3 • 5" HONEYCOMB RTM

STYLEMASTER WAVE

ART. NO.: 13700-1105 (LTD) 13700-1104 (PURE)

IF YOU'RE INTO THE CLASSIC STYLE OF LONGBOARD SURFING, THEN THIS BEAUTY WILL WIN YOU OVER WITH THE FIRST WAVE YOU CATCH. EASY TO PADDLE, ITS ENDLESS FLOW AND INSANE GLIDE WILL LET YOU GET CREATIVE WITH YOUR RIDE.

As a classic noserider, this board is more influenced by Longboard surfing than any other board in our range. Easy to paddle, its super advanced surfing potential allows the deepest carves with a smooth flow, whilst you style up and down the wave with your toes hanging loose. The wide nose leaves plenty of room for creative riding and adds incredible wave catching potential. Available in our beautiful and supreme Custom Bamboo Sandwich construction as well as Pure Light technology in the sporty length of 9'0", the classic 10'0" and the all-new floaty 10'6".

KEY FEATURES

- > Super thin surfing style rails for full bite in the turns and on the face of the wave
- > Thin, slightly domed Longboard style deck
- > Wide nose for a pure nose riding experience
- > Classic smooth Longboard rocker and outline
- > Single concave entry transitioning into double concave/V bottom for super early catching and a smooth glide
- > Drawn in tail for grippy turns and control
- > Deluxe deck pad for cushioned steps – strategically placed in the main stance area – for comfort and reduced wax consumption
- > Longboard style 2+1 (sidebites plus single fin setup)

- > TRUE LONGBOARD FEELING
- > CRISP AND GRIPPY REACTIONS
- > NOSERIDER STYLE
- > INCREDIBLE GLIDE



	9'0"	10'0"	10'6"
STYLEMASTER LTD / STYLEMASTER PURE			
VOLUME	115L	135L	155L
WIDTH	28" / 71.7CM	30" / 76.2CM	31" / 78.7CM
LENGTH	9'0" / 274.3CM	10'0" / 304.8CM	10'6" / 320CM
STYLEMASTER LTD TECHNOLOGY	CSS - CUSTOM BAMBOO SANDWICH	CSS - CUSTOM BAMBOO SANDWICH	CSS - CUSTOM BAMBOO SANDWICH
STYLEMASTER PURE TECHNOLOGY	PURE LIGHT	PURE LIGHT	PURE LIGHT
FINBOXES	1 - US BOX, 2 - MULTI-BOX	1 - US BOX, 2 - MULTI-BOX	1 - US BOX, 2 - MULTI-BOX
FINS	1 - 6", 2 - 4 1/2" HONEYCOMB RTM	1 - 6", 2 - 4 1/2" HONEYCOMB RTM	1 - 8", 2 - 4 1/2" HONEYCOMB RTM

S A Y Y E S



T O N E W P A S S I O N S

KLAAS VOGET, VICTOR FERNANDEZ

FLY ALL-ROUND

ART. NO.: 13700-1109 (LTD), 13700-1107 (PURE), 13700-1108 (CF)

THE FLY IS THE QUINTESSENTIAL SUP RANGE FOR EVERYONE. FROM NEWBIE TO THE MORE EXPERIENCED PADDLER, THE FLY'S ALL-ROUND SHAPE PROVIDES AN EFFORTLESS AND SMOOTH GLIDE ACROSS FLAT WATER, PERFORMING WELL IN SMALL TO MID-SIZED WAVES. SUP IS FUN ON THE FLY!

Evolved from the early days of the sport, these shapes cater to all levels of experience. From those first steps onto a SUP, all the way through to those with decades of experience, the Fly family comes in a broad range of sizes and constructions to accommodate every individual's needs. Starting with the 9'6" for lighter/medium weight riders, going up to the super stable and floaty 11'2" for the greatest deal of buoyancy. A great platform for entry-level riders, the Fly line is classic with performance characteristics that you can enjoy for years to come.

KEY FEATURES

- > 11'2" available in Standard and Center fin version
- > 10'6" available in classic and WB shape, with added volume/extra stability
- > Flat deck with volume pulled out to the rails for stability
- > CAD sculpted balance flow curves
- > True surfing rocker line with a flat into full V bottom for engaging carving sensations off the tail
- > Low nose entry for effortless wave catching and glide
- > Sharp tail edges with softer rails up the nose for smooth power riding and drive through the turns
- > Fly LTD and Pure Light 2+1 fin setup (Fly Soft Top with US Single Fin)
- > Mastfoot insert for windsurfing option



KAI BATES

- > EASY AND STABLE PADDLING
- > GOOD GLIDE
- > SIMPLE WAVE CATCHING AND EFFORTLESS STEERING
- > MULTIPLE SIZES AND OPTIONS



FLY LTD / FLY PURE	9'6"	10'6"	WB 10'6"	11'2"	11'2" CENTER FIN
VOLUME	151L	177L	182L	236L	236L
WIDTH	31" / 78.7 CM	31" / 78.7 CM	32" / 81.3 CM	34" / 86.4 CM	34" / 86.4 CM
LENGTH	9'6" / 289 CM	10'6" / 320 CM	10'6" / 320 CM	11'2" / 340.4 CM	11'2" / 340.4 CM
FLY LTD TECHNOLOGY	CSS - CUSTOM BAMBOO SANDWICH	CSS - CUSTOM BAMBOO SANDWICH	CSS - CUSTOM BAMBOO SANDWICH	PURE LIGHT	PURE LIGHT
FLY PURE TECHNOLOGY	PURE LIGHT	PURE LIGHT	PURE LIGHT	PURE LIGHT	PURE LIGHT
FINBOXES	1 - 10" BOX, 2 - MULTI-BOX	1 - 10" BOX, 2 - MULTI-BOX	10" US BOX	1 - 10" BOX, POWER BOX	1 - 10" BOX, POWER BOX
FLY LTD FINS	1 - 8", 2 - 4 1/4" HONEYCOMB RTM	1 - 8", 2 - 4 1/4" HONEYCOMB RTM	10" BOX	1 - 10" BOX, POWER BOX	1 - 10" BOX, POWER BOX
FLY PURE FINS	1 - 8" NYLON, 2 - 4 1/4" RTM	1 - 8" NYLON, 2 - 4 1/4" RTM	8" NYLON	1 - 10" BOX, POWER BOX	1 - 8" NYLON, 1 - 340" NYLON

FLY SOFT TOP ALL-ROUND

ART. NO.: 13700-1106

THE FLY SOFT TOP IS THE QUINTESSENTIAL SUP FOR AN EASY AND GENTLE ENTRY INTO THE WORLD OF STAND UP PADDLING. THE SMOOTH ALL-ROUND SHAPE PROVIDES AN EFFORTLESS GLIDE ACROSS FLAT WATER ALL THE WAY TO SMALL AND MID-SIZED WAVES. SUP IS FUN ON THE FLY!

Evolved from the early days of the sport, these shapes cater to all levels of experience. From those first steps onto the board all the way through to riders with decades of experience, both the popular 10'6" and our super stable and floaty 11'2", are available in our gentle yet robust Soft Top technology. Converting into the ideal platform for those just starting Stand Up Paddling, it also comes with the mastfoot insert for windsurfing.

KEY FEATURES

- › Soft Top technology: gentle on deck, extra strong around rails, tail and nose
- › Flat deck with volume pulled out to the rails for stability
- › CAD sculpted balance flow curves
- › True surfing rocker line with a flat into full V bottom, for engaging carving sensations off the tail
- › Low nose entry for effortless wave catching and glide
- › Mastfoot insert for windsurfing option



- › PERFECT ENTRY MODEL
- › SOFT, GENTLE AND ROBUST
- › EASY AND STABLE PADDLING
- › SIMPLE WAVE CATCHING AND EFFORTLESS STEERING



FLY SOFT TOP	10'6"	11'2"
VOLUME	177L	236L
WIDTH	31" / 78.7CM	34" / 86.4CM
LENGTH	10'6" / 320CM	11'2" / 340.4CM
TECHNOLOGY	SOFT TOP	SOFT TOP
FINBOX	10" BOX	10" BOX
FIN	8" NYLON	8" NYLON

DIAMOND PURE

ALL-ROUND

ART. NO.: 13800-1110

SHINE BRIGHT LIKE A DIAMOND! OUR LADIES SUP DOESN'T ONLY LIGHT UP THE LINE-UP WITH TIMELESS STYLE AND GRACE, IT ALSO SHINES WITH ENDLESS ALL-ROUND ABILITIES AND PERFORMANCE. SMOOTH PADDLING AND ENGAGING RAILS, THIS WOMEN SPECIFIC DESIGN IS EASY TO USE AND WITH EFFORTLESS GLIDE.

The ultimate complement to our successful Fly range is a beautiful design, enriched with fresh new graphics and stylish colors. Flawless paddling is combined with direct turning and great rail to rail performance for smooth carving under delicate pressure. A well-balanced and wide volume distribution caters for easy steps back and forth on the deluxe deck pad, whilst cruising the wave in Longboard style. The Diamond comes in two sizes, the classic 9'6" and the most accessible Diamond you'll find, our 10'6".

KEY FEATURES

- › Flat deck with volume pulled out to the rails for stability
- › True surfing rocker line with a flat into full V bottom for engaging carving sensations off the tail
- › Low nose entry for effortless wave catching and glide
- › Sharp tail edges with softer rails up the nose for smooth power riding and drive through the turns
- › CAD sculpted balance flow curves
- › 2+1 fin setup
- › Mastfoot insert for windsurfing option



ALICE ARUTKIN

- › FEMALE SPECIFIC
- › GENTLE ALL-ROUNDER
- › EASY AND STABLE PADDLING
- › GOOD GLIDE
- › SIMPLE WAVE CATCHING AND EFFORTLESS STEERING



DIAMOND PURE	9'6"	10'6"
VOLUME	151L	177L
WIDTH	31"/78.7CM	31"/78.7CM
LENGTH	9'6"/289.5CM	10'6"/320.4CM
TECHNOLOGY	PURE LIGHT	PURE LIGHT
FINBOXES	1 - 10" BOX, 2 - MULTI-BOX	1 - 10" BOX, 2 - MULTI-BOX
FINS	1 - 8", 2 - 4 3/4" HONEYCOMB RTM	1 - 8", 2 - 4 3/4" HONEYCOMB RTM



WHAT IS LIFE

BUT ONE GRAND ADVENTURE

PAULINA HERPEL

RAY TOURING

ART. NO.: 13800-1114 (LTD), 13800-1113 (PURE)

TOTALLY REDESIGNED FOR 2018, THE RAY DELIVERS THE ULTIMATE TOURING EXPERIENCE. WITH OUTSTANDING STROKE EFFICIENCY, RACING STYLE WATERLINE AND EXCEPTIONAL STABILITY IT TRULY IS A GREAT ALL-ROUND CRUISER.

The 2018 Ray is available in two performance oriented touring designs of 12'6" and 14'0" long, both in the manoeuvrable width of 29.5". Whether it's exploring miles of coastline, lakes, channels or rivers, the Ray glides effortlessly into new territories with an uninterrupted paddle stroke. If you're looking for a daily endurance workout, pure family fun or the ultimate adventure tourer, this board will deliver this great combination of stability and performance for newcomers and advanced paddlers alike. Built in our lightweight and exclusive LTD Wood edition, as well as our durable and economically priced Pure Light construction.

KEY FEATURES

- > Performance oriented scoop rocker line for effortless glide and minimal wake off the tail
- > Narrow racing style nose for smooth water flow
- > Sharp water-cutting bow transforms into a flat bottom through the centre with a rolled V off the tail for optimum release and stability
- > Extra volume in the rails with a high apex ensures a dry and stable ride for you and your luggage
- > Deck V-Spine up the nose for quick recovery and water dispersal
- > Sharp rail edges from centre to tail for extra stability and release
- > Stretched outline maximizes waterline, wide square tail offers extra stability
- > Flat angled deck shape for secure stance and water release
- > Deck net attachment points



KAI-NICOLAS STEIMER, KLAAS VOGET

- > STABLE AND EFFICIENT GLIDE
- > EFFORTLESS DISTANCE
- > UNINTERRUPTED PADDLE STROKE
- > DRY AND STABLE RIDE



RAY LTD / RAY PURE	12'6" - 29.5"	14'0" - 29.5"
VOLUME	28.1L	28.1L
WIDTH	28.5" / 74.9 CM	28.5" / 74.9 CM
LENGTH	12'6" / 381 CM	14'0" / 426.7 CM
RAY LTD TECHNOLOGY	CS - CUSTOM BAMBOO SANDWICH	CS - CUSTOM BAMBOO SANDWICH
RAY PURE TECHNOLOGY	PURE LIGHT	PURE LIGHT
FINBOX	US BOX	US BOX
FIN	22 CM RTM - CARBON	22 CM RTM - CARBON

DIAMOND PURE TOURING

TOURING

ART. NO.: 13800-1115

NEW TO THE COMPOSITE RANGE IS THE DIAMOND TOURING. A SLIGHTLY SMALLER VERSION OF OUR EVER-POPULAR RAY, IT HAS HEAPS OF PERFORMANCE WITH EFFORTLESS GLIDE ALL WRAPPED UP IN STYLE!

To complement our Ray Touring range, we've developed a smaller version of our performance-oriented design enriched with fresh graphics and stylish colors. With dimensions of 11'6" x 29", the Diamond Pure Touring glides effortlessly into new territories with outstanding stroke efficiency. A combination of exceptional stability and performance inspires newcomers and advanced paddlers alike to explore miles of coastline, lakes or rivers on this all-round cruiser.

KEY FEATURES

- › Performance oriented scoop-rocker line for effortless glide and minimal wake off the tail
- › Narrow racing style nose for smooth water flow
- › Sharp water-cutting bow transforms into a flat bottom through the centre with a rolled V off the tail for optimum release and stability
- › Extra volume in the rails with a high apex ensures a dry and stable ride for you and your luggage
- › Deck V-Spine up the nose for quick recovery and water dispersal
- › Sharp rail edges from centre to tail for extra stability and release
- › Stretched outline maximizes waterline, wide square tail offers extra stability
- › Flat angled deck shape for secure stance and water release
- › Deck net attachment points
- › Durable and value-minded Pure Light technology



PAULINA HERPEL

- › WOMEN SPECIFIC
- › GENTLE CRUISER
- › STABLE AND GRACEFUL GLIDE
- › EFFORTLESS DISTANCE



11'6" x 29"
224L
29" / 73.7 CM
11'6" / 350.5 CM
PURE LIGHT
US BOX
1 x 18.5 CM RTM - CARBON

DIAMOND PURE TOURING
VOLUME
WIDTH
LENGTH
TECHNOLOGY
FIN BOX
FIN





T H E T O O L S

T O W I N

ARTHUR ARUTKIN

FALCON

OCEAN / ALL-ROUND RACE

ART. NO.: 13700-1111

THE FALCON IS THE WEAPON OF CHOICE FOR ALL-ROUND SUP RACING. FROM FLAT WATER TO EXTREME OPEN OCEAN CONDITIONS, THE FALCON WILL GET YOU THERE FIRST.

Get ready to be pushed as the Falcon's adaptive style puts you ahead of the fleet. A maximum speed waterline combined with just the right amount nose lift delivers uninterrupted speed and glide, no matter how aggressive the chop. The feather light Custom Carbon Sandwich Light Finish construction enhances acceleration and response time. An absolute pleasure to paddle in any situation, the Falcon comes in two widths of 24.75" and 26.75", in both 12'6" and 14'0", as well as 14'0" x 28.75", and is equipped with a specially designed RTM Race fin for premium race performance.

KEY FEATURES

- › Outline with straightened mid section for maximum stability and minimum drag
- › Low entry rocker line with fine tuned bottom shape for optimized water flow in slight chop and flat water conditions
- › Added nose lift to prevent catching or nose diving
- › High apex with plenty of extra volume in the rails of the front section of the board for uninterrupted glide over chop and forgiving steering when catching runners
- › Hard release edges from centre to tail for maximum stability and clean water release
- › Deck shape with slight recess and increased volume pulled all the way to the rails for extra stability
- › Clean open deck for easy manoeuvring, kick turns and quick water drainage
- › Super light weight construction
- › CAD analyzed surfaces and curve flow
- › 12'6": Wider tail for increased surfing and turning abilities
- › 14'0": Drop pintail outline for maximum control and reduced lift and drag off the tail



ARTHUR ARUTKIN

- › INCREDIBLY FAST AND EFFICIENT
- › MAINTAINS SPEED BOTH UP AND OVER BUMPS
- › SIMPLE FOOT STEERING ON RUNNERS
- › FAST ON OPEN OCEAN, FAST IN THE FLATS



FALCON	VOLUME	WIDTH	LENGTH	TECHNOLOGY	FINBOX	FIN
12'6" x 24.75"	258L	24.75" / 62.8 CM	12'6" / 381 CM	CCS - CUSTOM CARBON SANDWICH	US BOX	19.5 CM RTM - CARBON
14'0" x 24.75"	298L	24.75" / 62.8 CM	14'0" / 426.7 CM	CCS - CUSTOM CARBON SANDWICH	US BOX	19.5 CM RTM - CARBON
12'6" x 26.75"	276L	26.75" / 67.9 CM	12'6" / 381 CM	CCS - CUSTOM CARBON SANDWICH	US BOX	22 CM RTM - CARBON
14'0" x 26.75"	311L	26.75" / 67.9 CM	14'0" / 426.7 CM	CCS - CUSTOM CARBON SANDWICH	US BOX	22 CM RTM - CARBON
14'0" x 28.75"	338L	28.75" / 73 CM	14'0" / 426.7 CM	CCS - CUSTOM CARBON SANDWICH	US BOX	22 CM RTM - CARBON

STRIKE

FLATWATER RACE

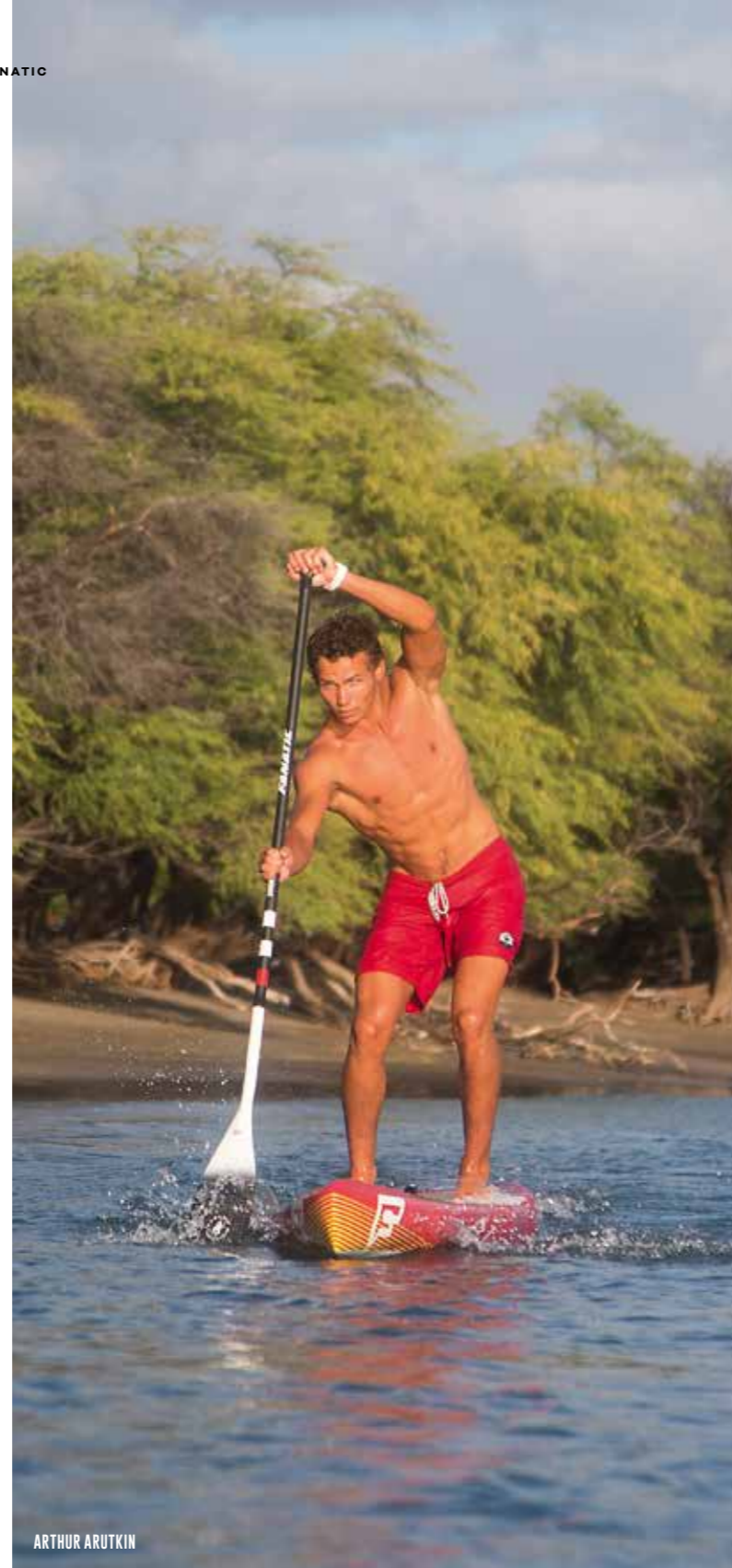
ART. NO.: 13700-1112

THE STRIKE IS A ZERO COMPROMISE FLATWATER RACING HULL. DEVELOPED FOR PURE FUNCTION AND TOP SPEEDS, IT'S THE WEAPON OF CHOICE FOR BOTH GLASSY AND CHOPPY WATER RACING – THE FORMULA NEEDED TO WIN!

Our Strike delivers unlimited speed in flatwater races and the required balance to stay ahead when the going gets rough. Three 14'0" racing hulls in widths of 26", 24" and our brand new 21.5" speed machine, as well as the 12'6" x 25", come in our high tech Custom Carbon Sandwich Light Finish technology, including a specially designed RTM Race fin.

KEY FEATURES

- › Brand new 14'0" x 21.5" with deep recess in standing area for low point of gravity and maximum stability
- › Minimum curved scoop rocker line from tail to nose for maximized waterline and clean release
- › Narrow, parallel outlines for highest speeds and efficiency
- › Slightly wider nose and tail for increased stability and even more parallel outline
- › Nose shape for perfect transition from cutting through water to actually lift the board and creates a whole new plane
- › Wide square tail allows for quick kick turning and additional stability
- › Hard release edges from centre to tail for minimal drag
- › Flat V-deck shape in the standing area for quick water drainage
- › Increased volume especially in the tail to keep the board above the water at all times, pulled all the way to the rails for maximum stability
- › Low volume curve in the nose to minimize side wind effects/reduced nose weight
- › CAD analysed precision



ARTHUR ARUTKIN

- › ZERO COMPROMISE FLATWATER RACING
- › INCREDIBLY FAST
- › SUPER EFFICIENT GLIDE
- › CLEAN AND STABLE WATERLINE

NEW SHAPE

THE FASTEST STRIKE YET!
(14'0" x 21.5")



STRIKE	VOLUME	WIDTH	LENGTH	TECHNOLOGY	FIN BOX	FIN
12'6" x 25"	28L	25" / 63.5CM	12'6" / 381CM	CCS - CUSTOM CARBON SANDWICH	US BOX	19.5CM RTM - CARBON
14'0" x 21.5"	TBC	21.5" / 54.61CM	14'0" / 426.7CM	CCS - CUSTOM CARBON SANDWICH	US BOX	19.5CM RTM - CARBON
14'0" x 24"	250L	24" / 61CM	14'0" / 426.7CM	CCS - CUSTOM CARBON SANDWICH	US BOX	19.5CM RTM - CARBON
14'0" x 26"	271L	26" / 66CM	14'0" / 426.7CM	CCS - CUSTOM CARBON SANDWICH	US BOX	22CM RTM - CARBON

P A D D L E S



W I T H P O W E R

MARÍA ANDRÉS

PADDLE TECHNOLOGY 2018

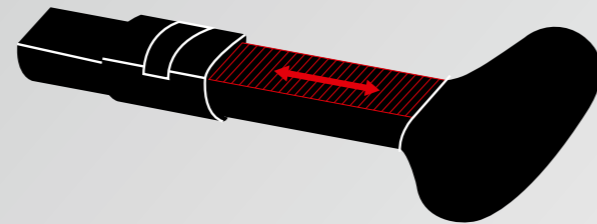


AIRTON COZZOLINO

2018

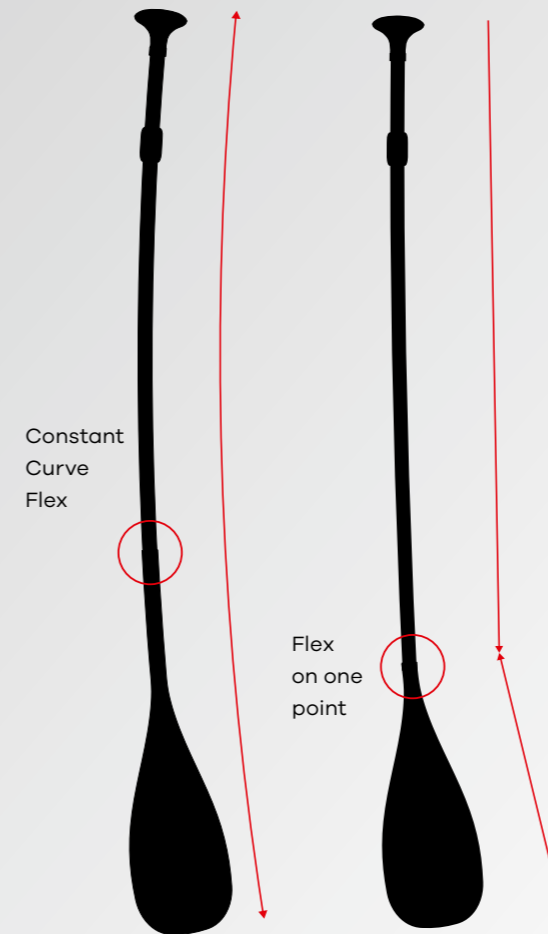
Choosing the right paddle is as important as choosing the right board. With precision and care we have designed paddles in the best materials, which are strong and light, with the perfect amount of flex to deliver maximum power while allowing you to paddle in total comfort and style. We offer the perfect choice from beginner to pro for genders, every size and age. We name our paddle range according to the Carbon content, for logical choices regarding stiffness, performance and price, so you can find your perfect paddle immediately.

(ANTI TWIST)



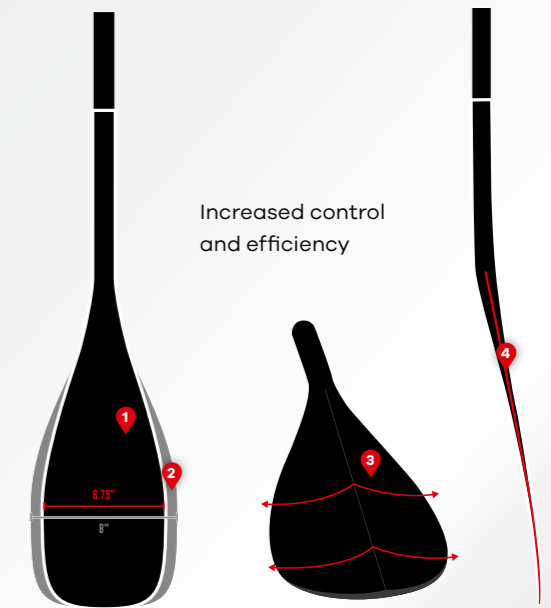
FANATIC ANTI TWIST SYSTEM

Our Anti Twist System, with its flat section on the extension and a matching cleat system, puts an end to using additional forces whilst locking your adjustable system. It ensures that the handle and blade are always lined up correctly. Paddle with confidence – your shaft and handle won't move! Our adjustable C100/C80/C50 models are equipped with Anti Twist System.



FANATIC UNION JOINT SYSTEM

In the past, all paddle flex patterns were made up of two parts: the blade, and the shaft. An oversized stiff joint disrupted these two flexible parts, where paddle and shaft were connected. The Fanatic Union System paddle has revolutionised the unified flex pattern. It now runs seamlessly from the tip of the blade all the way to the shaft. By moving the connection joint further up the shaft, it tapers perfectly into a RDM joint, resulting in constant flex for an unmatched spring and response with every stroke. From the moment the blade enters the water your energy is converted into forward drive. The Union paddle is available in four construction styles for a straightforward selection of paddles to match your performance and budget.



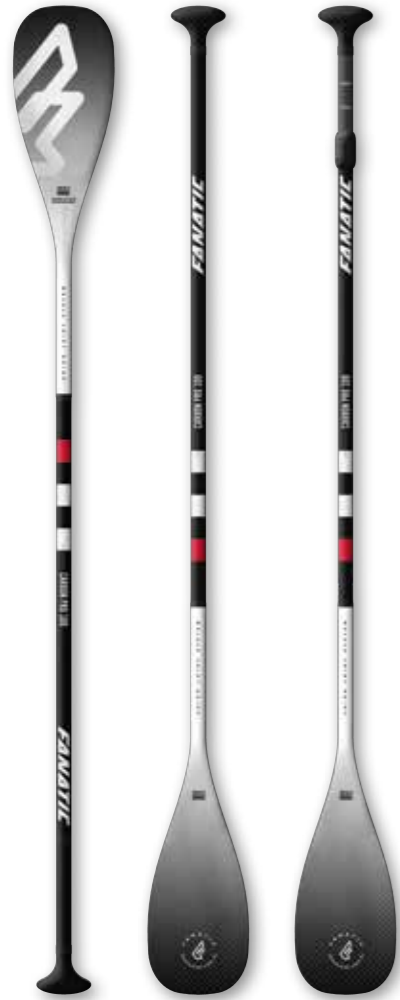
OUR 6.75"

- 1 New 6.75" blade for reduced swing weight and better aerodynamics
- 2 Old 8" blade
- 3 Double concave surface for increased control and efficiency
- 4 ABS reinforcement

For those paddling with a higher frequency, we offer the next step from our favoured 7.25" blade. Slight double concaves cater for a super controlled stroke with better traction and ultimately a higher efficiency. The extra powers these concaves create allow for this small blade size with better aerodynamics between the strokes and reduced swing weight compared to larger blades. The 6.75" blade is available with our performance models C100/C80 and our Diamond ladies paddle.

CARBON PRO 100

ART. NO.:	FIX LENGTH	ADJUSTABLE	3PIECE
	13800-1300	13800-1301	-



AVAILABLE BLADE SIZE 6.75" / 7.25"

The Carbon Pro model comes with a super light and responsive 100% 12K Carbon blade. Combined with our Union paddle design and its 100% 3K Carbon shaft, it is strong yet one of the lightest paddles around. With a reduction in swing weight, this paddle has an ultra fast flex response from the tip of the blade right through to the top of the handle, which also shines in precious 12K Carbon. The Carbon Pro paddle is available in both 7.25" and our 6.75" blade size. Each has an integrated ABS blade protector and is available in fixed length or adjustable shaft, featuring our Anti Twist System.

CARBON 80

ART. NO.:	FIX LENGTH	ADJUSTABLE	3PIECE
	13800-1302	13800-1301	13800-1304



AVAILABLE BLADE SIZE 6.75" / 7.25"

Our Carbon 80 paddle is the high performance choice for the ambitious paddler. Top flex and response is guaranteed for effortless handling through an 80% Carbon blade with ABS blade protector and shaft plus additional Kevlar shaft webbing. Available in 7.25" and 6.75" blade size, the Union system has the most supreme flex pattern running from the top of the handle to the tip of the blade. Fixed or adjustable shaft lengths, or even an adjustable 3-piece version including a handy carry bag, with our Anti Twist System, you're sure to have the most effective paddle stroke on the water.

BAMBOO CARBON 50

ART. NO.:	FIX LENGTH	ADJUSTABLE	3PIECE
	13800-1305	13800-1306	13800-1307



AVAILABLE BLADE SIZE 7.25"

Style and performance are combined in the Bamboo Carbon 50. A 50% Carbon core covered in precious Bamboo finish leaves a great visual impact for this entry performance paddle. Benefiting from the Union Joint system, this is an outstanding construction for those starting to gain skill on a SUP. The twist and flex in the blade is superbly controlled through its' design and is available with a 7.25" blade with fixed or adjustable shaft and in our handy adjustable 3-piece version. Our Anti Twist System on the adjustable shafts will keep the handle in place at all times.

CARBON 35

ART. NO.:	ADJUSTABLE	3PIECE
	13800-1309	13800-1310



AVAILABLE BLADE SIZE 7.25"

Our Carbon 35 adjustable paddle with its matt finish 35% Carbon/Glass shaft and strong, ABS protected carbon composite blade is the top choice for any entry level paddler ready to go from zero to hero. With the Union Joint system and a blade size of 7.25" your strokes are highly effective. Available in standard adjustable or as 3-piece Carbon 35 adjustable for the most convenient paddle transport ever.

DIAMOND CARBON 35

ART. NO.:	ADJUSTABLE	3PIECE
	13800-1311	13800-1312



AVAILABLE BLADE SIZE 6.75"

The perfect match for our ladies SUPs Diamond, Diamond Touring and our Diamond Air models. Adjustable to your size and style, this is the super effective yet most stylish paddle to cruise around. Built with our small 6.75" durable carbon composite blade with white ABS rail protection and a 35% Carbon shaft covered in fresh mint graphics. Available in adjustable or 3-piece version.

CARBON 25 HD

ART. NO.:	ADJUSTABLE	3PIECE
	13800-1340	13800-1341



AVAILABLE BLADE SIZE 8"

Our dedicated intermediate/river paddle Carbon 25 HD 8" has an excellent flex to weight ratio, delivering beginner and aspiring paddlers alike with all the characteristics needed to progress. The Carbon 25 HD is available in both 165 – 220 cm adjustable and adjustable 3-piece versions, so it can be shared amongst family and friends. A special feature is the fully integrated rubber edge rail blade protection that will keep you, your board and paddle in one piece – perfect for the action seeker looking to conquer wild waters of rivers and streams with the occasional bottom contact. It's unique carbon look rounds off this incredible package.

STANDARD ALU

ART. NO.:	ADJUSTABLE	3PIECE
	13800-1342	13800-1343



AVAILABLE BLADE SIZE 8"

For top quality and value for money, the standard Aluminium paddle is the answer. Our latest version is about 200g lighter than its predecessor, making it easy to handle for first timers. The new highly durable plastic blade will withstand the daily hits from the unavoidable learning curve. The adjustable range of 165 – 220 cm ensures everyone – no matter his/her size – is able to have a go. The removable foam collar gives the paddle buoyancy. Available also in a transport friendly 3-piece version.*

*Don't leave your Alu paddle float, it may sink even with foam collar!

RIPPER CARBON 25

ART. NO.: ADJUSTABLE
13800-1321



AVAILABLE BLADE SIZE 6.5"

We understand that kids need to be encouraged and that often starts with them being comfortable with the equipment they are using. We have come up with paddles specifically designed for juniors and as the perfect partner for our Ripper Air kids iSUP boards. Our lightweight Ripper Carbon 25 is newly designed for 2018 with a unique Carbon look and our highly durable 6.5" carbon composite blade to withstand the daily hits from the unavoidable learning curve. Designed to unleash the grommets playful nature and their hunger to be out there for hours without feeling tired. Adjustable from 130 – 165 cm, it just grows with them.

RIPPER ALU

ART. NO.: ADJUSTABLE
13800-1320



AVAILABLE BLADE SIZE 6.5"

The Ripper Alu paddle is the standard entry-level paddle for kids. With its quality shaft and stiff, durable plastic blade it delivers the right amount of flex for the younger, lighter riders. With the added extra of the adjustable 130 – 165 cm length, there are no limits to a youngster's experience.*

*Dont leave your Alu paddle float, it may sink even with foam collar!



MAXI GERTENBACH, TOM GUILLO

PROMO WEAR 2018



TEE SS ADDICTED TO RIDE
heather grape red
men S – XXL
Art. No.: 13802-5005



TEE SS BOARDRIDING
cream heather grey
men S – XXL
Art. No.: 13802-5006



TEE SS FANATIC
slub heather grey
men S – XXL
Art. No.: 13802-5007



TEE SS F LOGO
white
men S – XXL
Art. No.: 13802-5008



HOODIE ADDICTED TO RIDE
dark heather denim
men XS – XXL
Art. No.: 13800-5215



TEE SS ADDICTED TO RIDE
white
women S – L
Art. No.: 13803-5010



TANK FANATIC
cream heather grey
women S – L
Art. No.: 13703-5008



TEE SS F LOGO KIDS
white
kids
Art. No.: 13802-5009



WET SHIRT FANATIC
grey
men XS – XXL
Art. No.: 13702-5014



BEANIE FANATIC
heather grey
unisex
Art. No.: 13700-5812



FITTED CAP F
light heather grey
unisex
Art. No.: 13700-5810



NET CAP BOARDRIDING
red
unisex
Art. No.: 13800-5805



MONOSNAP CAP ADDICTED TO RIDE
New Era, melange grey
unisex
Art. No.: 13800-5806



CAMOSNAP CAP
New Era, grey
unisex
Art. No.: 13800-5807



SNAPBACK CAP ADDICTED TO RIDE
heather grey
unisex
Art. No.: 13800-5808



SUNVISOR FANATIC
red
unisex
Art. No.: 13700-5811



AIRTON COZZOLINO

QUICKFINDER PADDLES



MODEL	CARBON PRO 100	CARBON 80	BAMBOO CARBON 50	CARBON 35		DIAMOND CARBON 35	CARBON 25 HD	ALUMINIUM	RIPPER CARBON 25	RIPPER ALUMINIUM
ART. NO. Fix Adjustable 3-piece	13800-1300 13800-1301 -	13800-1302 13800-1303 13800-1304	13800-1305 13800-1306 13800-1307	- 13800-1309 13800-1310		- 13800-1311 13800-1312	- 13800-1340 13800-1341	- 13800-1342 13800-1343	- 13800-1321 -	- 13800-1320 -
CATEGORY	Pro Model	High Performance	Entry Performance	Entry Performance		Girls Entry Performance	Entry	Entry	Kids	Kids
ANTI TWIST	x	x	x	-		-	-	-	-	-
LENGTH FIX	x (< 219 cm)	x (< 219 cm)	x (< 219 cm)	-		-	-	-	-	-
LENGTH ADJUSTABLE	x (165 - 220 cm)	x (165 - 220 cm)	x (165 - 220 cm)	x (165 - 220 cm)		x (165 - 220 cm)	x (165 - 220 cm)	x (165 - 220 cm)	x (130 - 165 cm)	x (130 - 165 cm)
LENGTH 3-PIECE	-	x (165 - 220 cm)	x (165 - 220 cm)	x (165 - 220 cm)		x (165 - 220 cm)	x (165 - 220 cm)	x (165 - 220 cm)	-	-
BLADE SIZE	6.75"/17.1cm, 7.25"/18.4cm	6.75"/17.1cm, 7.25"/18.4cm	7.25"/18.4cm	7.25"/18.4cm		6.75"/17.1cm	8"/20.3cm	8"/20.3cm	6.5"/16.5cm	6.5"/16.5cm
BLADE AREA	86 sq.in./570cm ² 90 sq.in./580cm ²	86 sq.in./570cm ² 90 sq.in./580cm ²	90 sq.in./580cm ²	90 sq.in./580cm ²		86 sq.in./570cm ²	85 sq.in./548cm ² 85 sq.in./548cm ²	85 sq.in./548cm ²	70 sq.in./451cm ²	70 sq.in./451cm ²
BLADE MATERIAL	100% 12K Carbon	80% Carbon	Front: Bamboo, Back: Carbon Composite	Carbon Composite		Carbon Composite	ABS blade; Red rubber edge	ABS blade	ABS blade	ABS blade
SHAFT MATERIAL	100% 3K Carbon	80% Carbon	50% Carbon/Bamboo	35% Carbon		35% Carbon	25% Carbon	Aluminium	25% Carbon	Aluminium
CHARACTER	Featherlight High performance flex response The paddle of the Pros!	Light & strong High performance flex response	Light Precious Good flex	Light & strong Budget friendly		Light & strong Diamond optic Budget friendly	Ultra strong & durable	Budget friendly	Light & strong kids paddle	Budget friendly kids paddle
TARGET RIDER	Experienced SUPer with the highest demands in terms of lightweight, flex & performance - whether in the waves or on the race course	Experienced to intermediate SUPer, looking for a high performance paddle with strong durability / weight ratio	Entry to intermediate level SUPer, looking for a beautiful paddle with good performance & easy handling	Entry to intermediate level SUPer, looking for an affordable paddle with good performance & easy handling		Ladies, from entry to intermediate level, looking for an affordable paddle with good performance & easy handling. Matching our Diamond boards	Entry level SUPer, looking for a robust & highly durable paddle with easy handling	Entry level SUPer, looking for a price point paddle for the first paddle experience	Kids, from entry to ripper level, looking for a light paddle with good performance & easy handling	Kids, looking for a budget friendly paddle to match their size & power

QUICKFINDER

COMPOSITE BOARDS



MODEL	PROWAVE LTD	STUBBY LTD	STUBBY FOIL	ALLWAVE	STYLEMASTER	FLY	DIAMOND PURE		RAY	DIAMOND PURE TOURING	FALCON	STRIKE
ARTICLE NUMBER	13800-1101	13800-1100	13800-1116	13800-1103 (LTD) 13700-1102 (Pure)	13700-1105 (LTD) 13700-1104 (Pure)	13700-1109 (LTD) 13700-1107 (Pure) 13700-1108 (CF) 13700-1106 (Soft Top)	13800-1110		13800-1114 (LTD) 13800-1113 (Pure)	13800-1115	13700-1111	13700-1112
SIZES	7'6" 8'2" 8'8" 9'2"	7'10" 8'3" 8'7" 8'10"	7'10" 8'7"	8'9" 9'0" 9'4" 9'8"	9'0" x 29" 10'0" x 30" 10'6" x 31"	9'6" 10'6" 10'6" WB 11'2" 11'2" CF	9'6" 10'6"		12'6" x 29.5" 14'0" x 29.5"	11'6" x 29"	12'6" x 24.75" 12'6" x 26.75" 14'0" x 24.75" 14'0" x 26.75" 14'0" x 28.75"	12'6" x 25" 14'0" x 21.5" 14'0" x 24" 14'0" x 26"
CATEGORY	Radical Wave	Wave	Surf / SUP-Foil / Windsurf-Foil	Wave	Wave	All-round	All-round		Touring	Touring	Ocean/ All-round Race	Flatwater Race
TARGET RIDER	Experienced wave SUPer, who spends a fair amount of time in the waves & wants to progress in fast turns & wave manoeuvres	Experienced to intermediate wave SUPer, looking for a new sensation in the waves in terms of speed, easy catching & biting rails	Experienced SUPer/Windsurfer, looking for a new sensation in the waves with an open mind to explore new ways of having fun with one and the same board	Intermediate wave SUPer, looking for a stable & easy platform to catch wave after wave, even when it's mushy & choppy	Classic Longboard Lover! SUPers looking to take their Longboard surfing skills onto the SUP	Ladies, from entry to intermediate level, looking for their one board for everything – from flatwater cruising to small waves	Entry to intermediate level SUPer, looking for their one board for everything – from flatwater cruising to small waves		Entry to intermediate level female SUPer, who likes to explore & is able to make some distance in their home waters	Entry to intermediate level SUPer, who likes to explore & is able to make some distance in their home waters	Intermediate to top level SUPer, looking for a board for Downwinders & to win open ocean & flatwater races in all kinds of conditions	Intermediate to top level SUPer, looking for the fastest board on flatwater & to win flatwater races
IDEAL CONDITIONS	Reef, point & beach breaks, head high to larger, powerful & fast surf	All-round wave conditions, from small & sloppy to more powerful surf	Surf: Same as Stubby LTD SUP-Foil: Rolling, barely breaking surf to over headhigh waves Windsurf-Foil: Flatwater lakes to open ocean breeze to medium windspeeds	Less than perfect waves, from small to overhead high surf	Long & less powerful waves, small to overhead high surf	Flatwater to smaller & softer waves	Flatwater to smaller & softer waves		Flatwater – lakes & calm open ocean sea	Flatwater – lakes & calm open ocean sea	Choppy flatwater to downwind open ocean surf	Flatwater
CHARACTER	Powerful performance surf style Fast carves Snappy & grippy turns	Compact parallel rails concept Reduced swing weight Stable & balanced paddling Quick acceleration Controlled lines Slashy & snappy surf style	Foil surfing and wave SUP use Same performance features of Stubby LTD Adjustable System for a variety of Foils Greatest multi-sports range with additional inserts for windsurf-foiling	Wide & stable Easy paddling & wave catching Tight & easy turns All types of waves	True Longboard feeling Crisp & grippy reactions »Noserider«-Style Incredible glide	Easy & stable paddling Good glide Simple wave catching & effortless steering Multiple sizes & options	Gentle Ladies-All-rounder Easy & stable paddling Good glide Simple wave catching & effortless steering		Stable & efficient glide Effortless distance	Stable & efficient glide Effortless distance	Incredibly fast & efficient Maintains speed up & over bumps Simple foot steering on runners Fast open ocean, fast in the flats	Zero compromise flat water racing Incredibly fast Super efficient glide Clean & stable waterline
MASTBASE INSERT	x	x	x	x	x	x	x		x	x	-	-
TECHNOLOGY	BXF	BXF	BXF	BXF, Pure Light	CBS, Pure Light	CBS, Pure Light, Soft Top	Pure Light		CBS, Pure Light	Pure Light	CSS	CSS



PAULINA HERPEL

COMPOSITE BOARDS

MODEL	VOLUME	WIDTH	LENGTH	FINBOX	FINS	TECHNOLOGY	MASTB. INSERT	
ProWave LTD 7'6"	80I	27.5"/69.9cm	7'6"/228.6cm	5 x Multi-Box	3x4.75" Honeycomb RTM	BXF – Biax Fibre / Full PVC Sandwich	x	
ProWave LTD 8'2"	100I	28.5"/72.4cm	8'2"/248.9cm					
ProWave LTD 8'8"	110I	29.5"/74.9cm	8'8"/264.2cm					
ProWave LTD 9'2"	127I	30.5"/77.5cm	9'2"/279.4cm					
Stubby LTD 7'10"	95I	28.5"/72.4cm	7'10"/238.8cm	5 x Multi-Box	3x5" Honeycomb RTM	BXF – Biax Fibre / Full PVC Sandwich	x	
Stubby LTD 8'3"	105I	28.75"/73cm	8'3"/251.5cm					
Stubby LTD 8'7"	120I	29.25"/74.3cm	8'7"/261.6cm					
Stubby LTD 8'10"	135I	30.5"/77.5cm	8'10"/269.2cm					
Stubby LTD Foil Edition 7'10"	95I	28.5"/72.4cm	7'10"/238.8cm	5 x Multi-Box,	3x5" Honeycomb RTM	BXF – Biax Fibre / Full PVC Sandwich	x	
Stubby LTD Foil Edition 8'7"	120I	29.25"/74.3cm	8'7"/261.6cm	2 x Masttrack				
AllWave LTD 8'9"	145I	32"/81.3cm	8'9"/266.7cm	5 x Multi-Box	3x5" Honeycomb RTM	BXF – Biax Fibre / Full PVC Sandwich	x	
AllWave LTD 9'0"	159I	32"/81.3cm	9'0"/274.3cm					
AllWave LTD 9'4"	173I	33"/83.8cm	9'4"/284.5cm					
AllWave LTD 9'8"	187I	33"/83.8cm	9'8"/294.6cm					
AllWave Pure 8'9"	145I	32"/81.3cm	8'9"/266.7cm	3 x Multi-Box	3x5" Honeycomb RTM	Pure Light	x	
AllWave Pure 9'0"	159I	32"/81.3cm	9'0"/274.3cm					
AllWave Pure 9'4"	173I	33"/83.8cm	9'4"/284.5cm					
AllWave Pure 9'8"	187I	33"/83.8cm	9'8"/294.6cm					
Stylemaster LTD 9'0"	115I	29"/73.7cm	9'0"/274.3cm	1 x US Box, 2 x Multi-Box	1 x 6", 2 x 4 1/2" Honeycomb RTM	CBS – Custom Bamboo Sandwich	x	
Stylemaster LTD 10'0"	135I	30"/76.2cm	10'0"/304.8cm		1 x 8", 2 x 4 1/2" H. RTM			
Stylemaster LTD 10'6"	155I	31"/78.7cm	10'6"/320cm	1 x US Box, 2 x Multi-Box	1 x 6", 2 x 4 1/2" Honeycomb RTM	Pure Light	x	
Stylemaster Pure 9'0"	115I	29"/73.7cm	9'0"/274.3cm		1 x 8", 2 x 4 1/2" H. RTM			
Stylemaster Pure 10'0"	135I	30"/76.2cm	10'0"/304.8cm		1 x 10" Box, 2 x Multi-Box	1 x 8", 2 x 4 3/4" Honeycomb RTM	CBS – Custom Bamboo Sandwich	x
Stylemaster Pure 10'6"	155I	31"/78.7cm	10'6"/320cm			1 x 10" Box, 2 x Multi-Box		
Fly LTD 9'6"	151I	31"/78.7cm	9'6"/289.6cm	1 x 10" Box, 2 x Multi-Box	1 x 8", 2 x 4 3/4" Honeycomb RTM	CBS – Custom Bamboo Sandwich	x	
Fly LTD 10'6"	177I	31"/78.7cm	10'6"/320cm					
Fly Pure 9'6"	151I	31"/78.7cm	9'6"/289.6cm	1 x 10" Box, 2 x Multi-Box	1 x 8" Nylon, 2 x 4 3/4" RTM	Pure Light	x	
Fly Pure 10'6"	177I	31"/78.7cm	10'6"/320cm					
Fly Pure WB 10'6"	182I	32"/81.3cm	10'6"/320cm	US Box	TBC	Pure Light	x	
Fly Pure 11'2"	236I	34"/86.4cm	11'2"/340.4cm	10" Box	8" Nylon			
Fly Pure 11'2" Center Fin	236I	34"/86.4cm	11'2"/340.4cm	10" Box, Powerbox	8" Nylon, 340" Nylon			
Fly Soft Top 10'6"	177I	31"/78.7cm	10'6"/320cm	10" Box	8" Nylon	Soft Top	x	
Fly Soft Top 11'2"	236I	34"/86.4cm	11'2"/340.4cm		8" Nylon			
Diamond Pure 9'6"	151I	31"/78.7cm	9'6"/289.6cm	1 x 10" Box, 2 x Multi-Box	1 x 8", 2 x 4 3/4" Honeycomb RTM	Pure Light	x	
Diamond Pure 10'6"	177I	31"/78.7cm	10'6"/320cm					
Ray LTD 12'6" x 29.5"	251I	29.5"/74.9cm	12'6"/381cm	US Box	22cm RTM – Carbon	CBS – Custom Bamboo Sandwich	x	
Ray LTD 14'0" x 29.5"	291I	29.5"/74.9cm	14'0"/426.7cm					
Ray Pure 12'6" x 29.5"	251I	29.5"/74.9cm	12'6"/381cm	US Box	22cm RTM – Carbon	Pure Light	x	
Ray Pure 14'0" x 29.5"	291I	29.5"/74.9cm	14'0"/426.7cm					
Diamond Pure Touring 11'6" x 29"	224I	29"/73.7cm	11'6"/350.5cm	US Box	19.5cm RTM – Carbon	Pure Light	x	
Falcon 12'6" x 24.75"	259I	24.75"/62.8cm	12'6"/381cm	US Box	19.5cm RTM – Carbon	CCS – Custom Carbon Sandwich	-	
Falcon 12'6" x 26.75"	276I	26.75"/67.9cm	12'6"/381cm		22cm RTM – Carbon			
Falcon 14'0" x 24.75"	296I	24.75"/62.8cm	14'0"/426.7cm		19.5cm RTM – Carbon			
Falcon 14'0" x 26.75"	311I	26.75"/67.9cm	14'0"/426.7cm		22cm RTM – Carbon			
Falcon 14'0" x 28.75"	338I	28.75"/73cm	14'0"/426.7cm					
Strike 12'6" x 25"	251I	25"/63.5cm	12'6"/381cm					
Strike 14'0" x 21.5"	TBC	21.5"/54.61cm	14'0"/426.7cm	US Box	19.5cm RTM – Carbon	CCS – Custom Carbon Sandwich	-	
Strike 14'0" x 24"	250I	24"/61cm	14'0"/426.7cm					
Strike 14'0" x 26"	271I	26"/66cm	14'0"/426.7cm					22cm RTM – Carbon