



C O N T E N T

APPAREL MEN	4—11
APPAREL WOMEN	12—17
ACCESSORIES	18—19
FIT GUIDE	20—21

IMPRINT

Boards & More GmbH, Kelttenring 9, 82041 Oberhaching, Germany
Boards & More GmbH, Rabach 1, 4591 Molln, Austria

—
All data subject to change
© ION 2019

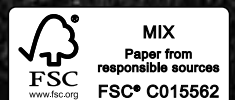
—
WWW.ION-PRODUCTS.COM

PICS

Bartek Wolinski, Volker Hansen, Sebastian Doerk,
Dan Bardos, Denis Pernath

DESIGN

—
3deluxe
Jost Wienke



UNITED BY STOKE



ION APPAREL 2020

More than a decade ago, a bunch of watermen gathered to build a new brand from scratch: their urge to challenge themselves out on and in the water while not compromising on the equipment led them to form ION.

Focusing on wetsuits and neoprene products for the international kiting and windsurfing scene from the very beginning, the ION spectrum grew rapidly: The unique combination of high-quality products wrapped in a progressive style and design also found its way into surfing, wakeboarding and SUP.

In late 2012, ION launched a separate bike division with functional cycling gear and protective equipment.

Today, ION is a brand run by passionate sports people from all kinds of different sports. Our work has always been dedicated to the development of products that allow you to experience nature and feel its forces.

Since the early days of ION, our driving force has come from the enthusiasm and satisfaction derived from mastering challenges: We simply love to shred. No matter what kind of board or bike we ride.

We are all on the same page: We all share the passion for a feeling called stoke and flow ...

And it doesn't matter who you are!

It doesn't matter whether you're a rookie or a pro, whether you're a weekend warrior or a seasoned veteran!

It doesn't matter what action sports you love the most and where you ride!

We are: **UNITED BY STOKE!**





APPAREL

MEN



BOARDSHORTS PERISCOPE 17"

ITEM NO. 46202-5708



. Very flexible and fast drying surf shorts that provide maximum comfort through perfect adjustability.

- . 2WAY_STRETCH FABRIC
- . PEACH SKIN SURFACE
- . POCKET WITH VELCRO CLOSURE

FIT: regular fit **WEIGHT:** 140,00 g

MATERIALS
100% POLYESTER

	AVAILABILITY	29/XS-S	30/S	31/S-M	32/M	33/M-L	34/L	36/XL	38/XXL
■ black	SS20								
■ firing red	SS20								

BOARDSHORTS AVALON 18"

ITEM NO. 46202-5704



. Very flexible and fast drying surf shorts that provide maximum comfort through perfect adjustability.

- . 4WAY_STRETCH FABRIC
- . BOARDSHORTS_CLOSURE 2.0
- . REPELLEN_SI
- . VELCRO PATCH POCKET

FIT: regular fit **WEIGHT:** 170,00 g

MATERIALS
88% POLYESTER / 12% ELASTANE

	AVAILABILITY	29/XS-S	30/S	31/S-M	32/M	33/M-L	34/L	36/XL	38/XXL
■ pistacchio	SS20								
■ firing red	SS20								

BOARDSHORTS SLADE 19"

ITEM NO. 46202-5702



. Very flexible and fast drying surf shorts that provide maximum comfort through perfect adjustability.

- . 4WAY_STRETCH FABRIC
- . BOARDSHORTS_CLOSURE 2.0
- . REPELLEN_SI
- . BACK POCKET WITH ZIP

FIT: regular fit **WEIGHT:** 160,00 g

MATERIALS
88% POLYESTER / 12% ELASTANE

	AVAILABILITY	29/XS-S	30/S	31/S-M	32/M	33/M-L	34/L	36/XL	38/XXL
■ black	SS20								
■ firing red	SS20								

BOARDSHORTS SLADE CAPSULE 19"

ITEM NO. 46202-5777



. Very flexible and fast drying surf shorts that provide maximum comfort through perfect adjustability.

- . 4WAY_STRETCH FABRIC
- . BOARDSHORTS_CLOSURE 2.0
- . REPELLEN_SI
- . BACK POCKET WITH ZIP

FIT: regular fit **WEIGHT:** 160,00 g

MATERIALS
88% POLYESTER / 12% ELASTANE

	AVAILABILITY	29/XS-S	30/S	31/S-M	32/M	33/M-L	34/L	36/XL	38/XXL
■ black	SS20								

BOARDSHORTS ION LOGO 20"

ITEM NO. 46202-5700



. Very flexible and fast drying surf shorts that provide maximum comfort through perfect adjustability.

- . 4WAY_STRETCH FABRIC
- . BOARDSHORTS_CLOSURE 2.0
- . REPELLEN_SI
- . BACK POCKET WITH ZIP

FIT: loose fit **WEIGHT:** 160,00 g

MATERIALS

88% POLYESTER / 12% ELASTANE

	29/XS-S	30/S	31/S-M	32/M	33/M-L	34/L	36/XL	38/XXL
black	FW20							
laguna green	FW20							
firing red	FW20							

BOARDSHORTS SEVEN PALMS 20"

ITEM NO. 46202-5706



. Very flexible and fast drying surf shorts that provide maximum comfort through perfect adjustability.

- . HEATHER LOOK 2WAY_STRETCH FABRIC
- . TWO HAND POCKETS, BUTTONED- AND ZIPPED BACK POCKETS
- . REPELLEN_SI

FIT: regular fit **WEIGHT:** 257,00 g

MATERIALS

77% POLYAMIDE / 20% POLYESTER /
3% ELASTANE

	29/XS-S	30/S	31/S-M	32/M	33/M-L	34/L	36/XL	38/XXL
black	SS20							
laguna green	SS20							

VOLLEY SHORTS 17"

ITEM NO. 46202-5710



. Very flexible and fast drying surf shorts that provide maximum comfort through perfect adjustability.

- . COTTON TOUCH FABRIC
- . 2 WELT HAND POCKETS AND 1 BACK POCKET

FIT: regular fit **WEIGHT:** 160,00 g

MATERIALS

Main fabric: 100% POLYAMID
Lining: 100% POLYESTER

	29/XS-S	30/S	31/S-M	32/M	33/M-L	34/L	36/XL	38/XXL
black	FW20							
laguna green	FW20							
grey	FW20							

TEE SS ION MAIDEN

ITEM NO. 46202-5012



. Comfortably fitted shirt with high-quality print.

- . SOFT GARMENT WASH
- . 160G/SQM SINGLE JERSEY
- . RUBBER PRINT

FIT: regular fit **WEIGHT:** 135,00 g

MATERIALS
100% COTTON

	AVAILABILITY	48/S	50/M	52/L	54/XL	56/XXL
white	SS20					
grey melange	SS20					

TEE SS NEVER TOO OLD

ITEM NO. 46202-5014



. Comfortably fitted shirt with high-quality print.

- . SOFT GARMENT WASH
- . 160G/SQM SINGLE JERSEY
- . WATERBASED PRINT

FIT: regular fit **WEIGHT:** 135,00 g

MATERIALS
100% COTTON

	AVAILABILITY	48/S	50/M	52/L	54/XL	56/XXL
pistachio	SS20					
firing red	SS20					

TEE SS CAPSULE

ITEM NO. 46202-5016



. Comfortably fitted shirt with high-quality print.

- . SOFT GARMENT WASH
- . CHEST POCKET DETAIL
- . 160G/SQM SINGLE JERSEY

FIT: regular fit **WEIGHT:** 157,00 g

MATERIALS
100% COTTON

	AVAILABILITY	48/S	50/M	52/L	54/XL	56/XXL
white	SS20					

TEE SS DARK PARADIZE

ITEM NO. 46202-5010



. Comfortably fitted shirt with high-quality print.

- . SOFT GARMENT WASH
- . 160G/SQM SINGLE JERSEY
- . PHOTO PRINT

FIT: regular fit **WEIGHT:** 135,00 g

MATERIALS
100% COTTON

	AVAILABILITY	48/S	50/M	52/L	54/XL	56/XXL
black	SS20					
white	SS20					

TEE SS THUNDER IN PARADISE

ITEM NO. 46202-5002



. Comfortably fitted shirt with high-quality print.

- . SOFT GARMENT WASH
- . 160G/SQM SINGLE JERSEY
- . INSIDE-OUT PRINT

FIT: regular fit **WEIGHT:** 135,00 g

MATERIALS
100% COTTON

	AVAILABILITY	48/S	50/M	52/L	54/XL	56/XXL
■ black	SS20					
■ white	SS20					

TEE SS 7PALMS

ITEM NO. 46202-5004



. Comfortably fitted shirt with high-quality print.

- . SOFT GARMENT WASH
- . 160G/SQM SINGLE JERSEY
- . DISCHARGE PRINT

FIT: regular fit **WEIGHT:** 135,00 g

MATERIALS
100% COTTON

	AVAILABILITY	48/S	50/M	52/L	54/XL	56/XXL
■ black	SS20					
■ grey melange	SS20					

TEE SS PALM HUGGERS OC

ITEM NO. 46202-5008



. Comfortably fitted shirt with high-quality print.

- . CALIFORNIC PANELLING
- . CHEST POCKET DETAIL
- . 160G/SQM SINGLE JERSEY
- . WATERBASED PRINT

FIT: regular fit **WEIGHT:** 155,00 g

MATERIALS
100% COTTON

	AVAILABILITY	48/S	50/M	52/L	54/XL	56/XXL
■ black	SS20					

TEE SS SURFING ELEMENTS

ITEM NO. 46202-5006



. Comfortably fitted shirt with high-quality print.

- . SOFT GARMENT WASH
- . 160G/SQM SINGLE JERSEY
- . WATERBASED PRINT

FIT: regular fit **WEIGHT:** 135,00 g

MATERIALS
100% COTTON

	AVAILABILITY	48/S	50/M	52/L	54/XL	56/XXL
■ black	SS20					
■ white	SS20					

SWEATER ION MAIDEN

ITEM NO. 46202-5202



. Crew neck with logo front and soft feeling on the inside.

- . FRENCH TERRY 325 G/M
- . ENZYME WASH
- . DEBOSSSED EMBELLISHMENT

FIT: regular fit **INSEAM LENGHT:** **WEIGHT:** 450,00 g

MATERIALS
84% COTTON / 16% POLYESTER

	AVAILABILITY	48/S	50/M	52/L	54/XL	56/XXL
■ black	SS20					
■ grey melange	SS20					

ZIP HOODY CLOUDBREAK

ITEM NO. 46202-5206



. Comfy zip hoodie with soft waterbased print and technical look due woven handpockets.

- . FRENCH TERRY 325 G/M
- . ENZYME WASH
- . WATERBASE PRINT

FIT: regular fit **INSEAM LENGHT:** **WEIGHT:** 670,00 g

MATERIALS
84% COTTON / 16% POLYESTER

	AVAILABILITY	48/S	50/M	52/L	54/XL	56/XXL
■ black	SS20					
■ grey melange	SS20					

ZIP HOODY 7PALMS

ITEM NO. 46202-5208



. Comfy zip hoodie

- . FRENCH TERRY 325 G/M
- . ENZYME WASH
- . SHOULDER YOKE PANELLING

FIT: regular fit **WEIGHT:** 670,00 g

MATERIALS
84% COTTON / 16% POLYESTER

	AVAILABILITY	48/S	50/M	52/L	54/XL	56/XXL
■ black	SS20					
■ firing red	SS20					

TEE SS LOGO

ITEM NO. 46202-5000



. Comfortably fitted shirt with high-quality print.

- . SOFT GARMENT WASH
- . 160G/SQM SINGLE JERSEY
- . RUBBER PRINT

FIT: regular fit **WEIGHT:** 135,00 g

MATERIALS
100% COTTON

	AVAILABILITY	48/S	50/M	52/L	54/XL	56/XXL
■ black	FW19					
■ grey melange	FW19					
■ pistacchio	FW19					
■ firing red	FW19					
■ laguna green	FW19					

HOODY LOGO

ITEM NO. 46202-5200



. Comfy hoodie with soft feeling on the inside and logo print on the chest.

. **FRENCH TERRY 325 G/M**
. **ENZYME WASH**

FIT: regular fit **WEIGHT:** 630,00 g

MATERIALS

84% COTTON / 16% POLYESTER

	AVAILABILITY	48/S	50/M	52/L	54/XL	56/XXL
■ black	FW19					
■ grey melange	FW19					
■ laguna green	FW19					

ZIP HOODY LOGO

ITEM NO. 46202-5204



. Comfy zip hoodie.

. **FRENCH TERRY 325 G/M**
. **ENZYME WASH**

FIT: regular fit **WEIGHT:** 670,00 g

MATERIALS

84% COTTON / 16% POLYESTER

	AVAILABILITY	48/S	50/M	52/L	54/XL	56/XXL
■ black	FW19					
■ firing red	FW19					

TEE SS DESTINATION

ITEM NO. 46200-5099



. Comfortably fitted shirt with high-quality print.

. **SOFT GARMENT WASH**
. **RUBBER PRINT**

FIT: regular fit **WEIGHT:** 135,00 g

MATERIALS

100% COTTON

	AVAILABILITY	44/XXS	46/XS	48/S	50/M	52/L	54/XL	56/XXL
■ mauritius	FW19							
■ capetown	FW19							
■ tarifa	FW19							
■ bretagne	FW19							
■ finale ligure	FW19							
■ tenerife	FW19							

FIELD JACKET

ITEM NO. 46202-5400



. Stylish and robust parker for cold beach or or urban days.

- . QUILTING
- . REPELLEN_SI
- . NEOPRENE TRIMMINGS

FIT: regular fit **WEIGHT:** 932,00 g

MATERIALS

Face Fabric: 100% POLYAMIDE

Lining: 100% POLYESTER

■ grey	AVAILABILITY	48/S	50/M	52/L	54/XL	56/XXL
	FW19					

WINDBREAKER JACKET

ITEM NO. 46202-5404



. Super comfy blouson-style windbreaker jacket.

- . DULL FACE FABRIC
- . REPELLEN_SI

FIT: regular fit **WEIGHT:** 260,00 g

MATERIALS

Main Fabric: 100% POLYESTER

Insert: 100% POLYESTER

■ black	AVAILABILITY	48/S	50/M	52/L	54/XL	56/XXL
		FW19				
■ firing red	AVAILABILITY	48/S	50/M	52/L	54/XL	56/XXL
	FW19					

RAIN JACKET

ITEM NO. 46202-5402



. Very lightweight and urban oriented rain jacket.

- . 2.000 MM WATER COLUMN & 2.000 GR/M/24H BREATHABILITY
- . 2 ZIPPED HANDPOCKETS
- . RUBBER PRINT

FIT: regular fit **WEIGHT:** 260,00 g

MATERIALS

Main Fabric: 100% POLYESTER

Insert: 100% POLYESTER

■ black	AVAILABILITY	48/S	50/M	52/L	54/XL	56/XXL
	FW19					



APPAREL

WOMEN



BOARDSHORTS MANDIRI WMS

ITEM NO. 46203-5703



. Very flexible and fast drying surf shorts that provide maximum comfort through perfect adjustability.

- . 4WAY_STRETCH FABRIC
- . REPELLEN_SI
- . ZIPPED BACK POCKETS
- . ELASTIC WAISTBAND

FIT: regular fit **INSEAM LENGHT:** 6" **WEIGHT:** 150,00 g

MATERIALS

88% POLYESTER / 12% ELASTANE

	AVAILABILITY	34/XS	36/S	38/M	40/L	42/XL
■ black	SS20					
■ laguna green	SS20					

HOTSHORTS TALLY WMS

ITEM NO. 46203-5701



. Very flexible and fast drying surf shorts that provide maximum comfort through perfect adjustability.

- . 4WAY_STRETCH FABRIC
- . REPELLEN_SI
- . BACK POCKET WITH ZIP
- . ELASTIC WAISTBAND

FIT: regular fit **INSEAM LENGHT:** 2 3/4" **WEIGHT:** 110,00 g

MATERIALS

88% POLYESTER / 12% ELASTANE

	AVAILABILITY	34/XS	36/S	38/M	40/L	42/XL
■ black	SS20					
■ laguna green	SS20					

HOTSHORTS TALLY CAPSULE WMS

ITEM NO. 46203-5766



. Very flexible and fast drying surf shorts that provide maximum comfort through perfect adjustability.

- . 4WAY_STRETCH FABRIC
- . REPELLEN_SI
- . BACK POCKET WITH ZIP
- . ELASTIC WAISTBAND

FIT: regular fit **WEIGHT:** 110,00 g

MATERIALS

88% POLYESTER / 12% ELASTANE

	AVAILABILITY	34/XS	36/S	38/M	40/L	42/XL
■ capsule	SS20					

VOLLEY SHORTS WMS

ITEM NO. 46203-5601



. Very flexible and fast drying shorts that provide maximum comfort through perfect adjustability.

- . ELASTIC WAISTBAND
- . 2 HANDPOCKETS

FIT: regular fit **WEIGHT:** 147,00 g

MATERIALS

100% COTTON

	AVAILABILITY	34/XS	36/S	38/M	40/L	42/XL
■ grey melange	SS20					

TEE SS ION MAIDEN WMS

ITEM NO. 46203-5003



. Comfortably fitted shirt with high-quality print.

- . SOFT GARMENT WASH
- . 160G/SQM SINGLE JERSEY
- . RUBBER PRINT

FIT: regular fit **WEIGHT:** 127,00 g

MATERIALS
100% COTTON

	AVAILABILITY	34/XS	36/S	38/M	40/L	42/XL
white	SS20					
rose	SS20					

TEE SS GLAMOROUS WMS

ITEM NO. 46203-5005



. Comfortably fitted shirt with high-quality print.

- . SOFT GARMENT WASH
- . 160G/SQM SINGLE JERSEY
- . WATERBASED PRINT

FIT: regular fit **WEIGHT:** 127,00 g

MATERIALS
100% COTTON

	AVAILABILITY	34/XS	36/S	38/M	40/L	42/XL
black	SS20					
grey melange	SS20					

TEE SS 7PALMS WMS

ITEM NO. 46203-5007



. Comfortably fitted shirt with high-quality print.

- . SOFT GARMENT WASH
- . 120G/SQM SINGLE JERSEY
- . WATERBASED PRINT

FIT: regular fit **WEIGHT:** 127,00 g

MATERIALS
100% COTTON

	AVAILABILITY	34/XS	36/S	38/M	40/L	42/XL
white	SS20					
laguna green	SS20					

TEE SS KEEPERS OF STOKE WMS

ITEM NO. 46203-5009



. Comfortably fitted shirt with high-quality print.

- . SOFT GARMENT WASH
- . 160G/SQM SINGLE JERSEY
- . RELAXED FIT

FIT: regular fit **WEIGHT:** 127,00 g

MATERIALS
100% COTTON

	AVAILABILITY	34/XS	36/S	38/M	40/L	42/XL
black	SS20					
laguna green	SS20					

TEE SS THUNDER IN PARADISE WMS

ITEM NO. 46203-5011



. Comfortably fitted shirt with high-quality print.

- . SOFT GARMENT WASH
- . 160G/SQM SINGLE JERSEY
- . RELAXED FIT

FIT: regular fit **WEIGHT:** 127,00 g

MATERIALS
100% COTTON

	AVAILABILITY	34/XS	36/S	38/M	40/L	42/XL
■ black	SS20					
■ white	SS20					

TEE SS CAPSULE WMS

ITEM NO. 46203-5017



. Comfortably fitted shirt with high-quality print.

- . SOFT GARMENT WASH
- . 120G/SQM SINGLE JERSEY
- . RUBBER PRINT

FIT: regular fit **WEIGHT:** 129,00 g

MATERIALS
100% COTTON

	AVAILABILITY	34/XS	36/S	38/M	40/L	42/XL
■ black	SS20					

TANK ION MAIDEN WMS

ITEM NO. 46203-5015



. Comfortably fitted shirt with high-quality print.

- . SOFT GARMENT WASH
- . 160G/SQM SINGLE JERSEY
- . WATERBASED PRINT

FIT: regular fit **WEIGHT:** 97,00 g

MATERIALS
100% COTTON

	AVAILABILITY	34/XS	36/S	38/M	40/L	42/XL
■ black	SS20					
■ shallow green	SS20					

SWEATER THUNDER IN PARADISE WMS

ITEM NO. 46203-5203



. Comfy sweater with soft feeling on the inside.

- . FRENCH TERRY 325 G/M
- . ENZYME WASH
- . RUBBER PRINT

FIT: regular fit**MATERIALS**

84% COTTON / 16% POLYESTER

	AVAILABILITY	34/XS	36/S	38/M	40/L	42/XL
■ black	FW19					
■ rose	FW19					

ZIP HOODY KEEPERS OF STOKE WMS

ITEM NO. 46203-5205



. Comfy zip hoodie with soft feeling on the inside.

- . FRENCH TERRY 325 G/M
- . ENZYME WASH
- . EMBROIDERY

FIT: regular fit**MATERIALS**

84% COTTON / 16% POLYESTER

	AVAILABILITY	34/XS	36/S	38/M	40/L	42/XL
■ black	FW19					
■ grey melange	FW19					
■ shallow green	FW19					

TEE SS LOGO WMS

ITEM NO. 46203-5001



. Comfortably fitted shirt with high-quality print.

- . SOFT GARMENT WASH
- . 160G/SQM SINGLE JERSEY
- . RUBBER PRINT

FIT: regular fit **WEIGHT:** 120,00 g**MATERIALS**

100% COTTON

	AVAILABILITY	34/XS	36/S	38/M	40/L	42/XL
■ black	FW19					
■ laguna green	FW19					
■ rose	FW19					

HOODY LOGO WMS

ITEM NO. 46203-5201



. Comfy Hoody with soft feeling on the inside.

- . FRENCH TERRY 325 G/M
- . ENZYME WASH
- . RUBBER PRINT

FIT: regular fit**MATERIALS**

84% COTTON/16% POLYESTER

	AVAILABILITY	34/XS	36/S	38/M	40/L	42/XL
■ black	FW19					
■ grey melange	FW19					
■ rose	FW19					





A C C E S S O R I E S

2020



CAP ION MAIDEN

ITEM NO. 47200-5855



- . SNAPBACK
- . 9FIFTY A-FRAME
- . EMBROIDERY LOGO

FIT: 9FIFTY

MATERIALS
100% COTTON

	AVAILABILITY	S/M	M/L
■ black	SS20	_____	_____
■ grey	SS20	_____	_____

CAP SCRUB

ITEM NO. 47200-5859



- . TRUCKER CAP WITH SNAPBACK
- . 9FIFTY A-FRAME
- . EMBROIDERY LOGO

FIT: 9FIFTY

MATERIALS
Visor and front panel: 100% COTTON
back panels: 100% POLYESTER

	AVAILABILITY	S/M	M/L
■ rusty leaves	SS20	_____	_____
■ shallow green	SS20	_____	_____

CAP LOGO

ITEM NO. 48130-5992



- . EMBROIDERY LOGO
- . SNAPBACK

MATERIALS
100% COTTON

	AVAILABILITY	one size
■ black	FW19	_____
■ grey	FW19	_____
■ shallow green	FW19	_____

BEANIE LOGO

ITEM NO. 47200-5800

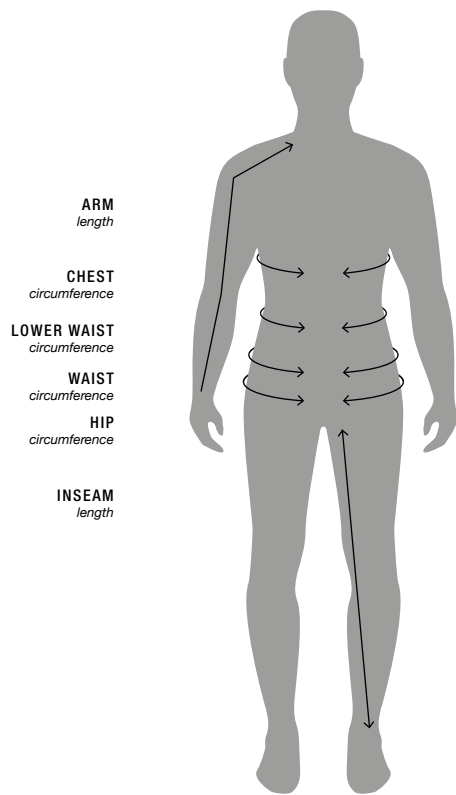


- . SIMPLE AND CLASSIC
- . STITCHED ION LOGO

MATERIALS
100% Acrylic

	AVAILABILITY	one size
■ black	FW19	_____
■ grey	FW19	_____

FIT GUIDE SIZE CHARTS



ARM
length

CHEST
circumference

LOWER WAIST
circumference

WAIST
circumference

HIP
circumference

INSEAM
length



REGULAR_FIT

Classic boardshorts cut for best possible performance.



LOOSE_FIT

Maximum freedom of movement achieved by an almost baggy style cut.

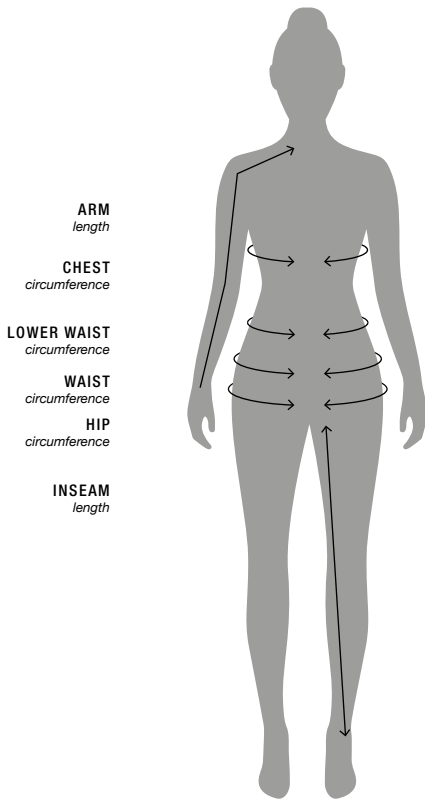
APPAREL

MEN

SIZE_TOPS MEN	XS		S		M		L		XL		XXL	
Measuring / Unit	Euro / cm	US / inch	Euro / cm	US / inch	Euro / cm	US / inch	Euro / cm	US / inch	Euro / cm	US / inch	Euro / cm	US / inch
Arm length	70-72	27,5-28,5	73-75	28,5-29	76-78	29,5-30,5	79-81	31-31,5	82-84	32-33	85-87	33-34
Chest circumference	86-90	34-35,5	91-95	35,5-37,5	96-100	37,5-39	101-105	39-41	106-110	41-43	111-115	43-45
Waist circumference	75-79	29,5-31	80-84	31-33	85-89	33-35	90-94	35-37	95-99	37-38,5	100-104	39-40,5
Hip circumference	86-90	33,5-35,5	91-96	35,5-38	97-102	38-40	103-108	40-42	109-114	42,5-44,5	115-120	44,5-47

SIZE_BOTTOMS MEN	XS		S		M		L		XL		XXL	
Measuring / Unit	Euro / cm	US / inch	Euro / cm	US / inch	Euro / cm	US / inch	Euro / cm	US / inch	Euro / cm	US / inch	Euro / cm	US / inch
Lower waist circumference	75-80	29-31	81-86	31,5-33,5	87-92	34-36	93-98	36-38	99-104	39-40,5	105-110	41-43
Hip circumference	85-90	33-35	91-96	35-38	97-102	38-40	103-108	40-42	109-114	42-44	115-120	44-47
Inseam length	77-82	30-32	77-82	30-32	83-85	32-33	86-88	34-35	86-88	34-35	89-91	35-36

* The following size charts will help you to estimate your individual size. Please consider the chart only as approximate values. For a perfect fit we recommend to try on. For knee and elbow pads we recommend a tight fit in order to ensure the best protection.



ARM
length

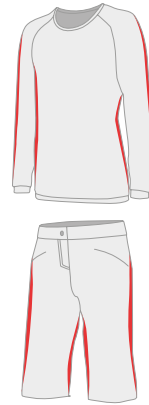
CHEST
circumference

LOWER WAIST
circumference

WAIST
circumference

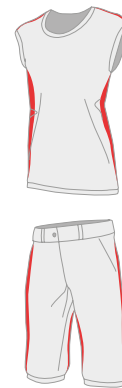
HIP
circumference

INSEAM
length



REGULAR_FIT

Classic boardshorts cut for best possible performance.



LOOSE_FIT

Maximum freedom of movement achieved by an almost baggy style cut.

APPAREL

WOMEN

SIZE_TOPS WOMEN	XS		S		M		L		XL	
	Euro / cm	US / inch	Euro / cm	US / inch	Euro / cm	US / inch	Euro / cm	US / inch	Euro / cm	US / inch
Arm length	65-67	25-26	68-70	26,5-27	71-73	27,5-28	74-76	28,5-29,5	77-79	30-31
Chest circumference	80-84	31-32,5	85-89	33-34,5	90-94	35-36,5	95-99	37-38,5	100-104	39-40,5
Waist circumference	60-64	23-25	65-69	25-27	70-74	27-29	75-79	29-30,5	80-84	31-32,5
Hip circumference	87-92	34-36	93-98	36-38	99-104	39-40,5	105-110	41-43	111-116	43-45

SIZE_BOTTOMS WOMEN	XS		S		M		L		XL	
	Euro / cm	US / inch	Euro / cm	US / inch	Euro / cm	US / inch	Euro / cm	US / inch	Euro / cm	US / inch
Lower waist circumference	72-77	28-30	78-83	30-32	84-89	33-35	90-95	35-37	96-101	37-39
Hip circumference	87-92	34-36	93-98	36-38	99-104	39-40,5	105-110	41-43	111-116	43-45
Inseam length	77-79	30-31	77-79	30-31	80-82	31-32	80-82	31-32	83-85	32-33



. TEE SS LOGO
. VOLLEY SHORTS 17"



. HOODY LOGO
. BOARDSHORTS AVALON 18"



. TEE SS LOGO
. ZIP HOODY LOGO
. BOARDSHORTS SEVEN PALMS 20"

LOOKBOOK





. TEE SS CAPSULE
. BOARDSHORTS SLADE CAPSULE 19"



. RAIN JACKET
. TEE SS SURFING ELEMENTS
. BOARDSHORTS ION LOGO 20"



. TEE SS PALM HUGGERS 0C
. BOARDSHORTS ION LOGO 20"



. TEE SS THUNDER IN PARADISE
. BOARDSHORTS PERISCOPE 17"





- . WINDBREAKER JACKET
- . TEE SS NEVER TOO OLD
- . BOARDSHORT S SLADE 19"



- . ZIP HOODY SEVEN PALMS
- . TEE SS DARK PARADISE
- . BOARDSHORT S AVALON 18"



- . TEE SS ION MAIDEN
- . VOLLEY SHORT S 17"



- . SWEATER ION MAIDEN
- . VOLLEY SHORT S 17"





-
- . WINDBREAKER JACKET
 - . TEE SS LOGO
 - . BOARDSHORT S SLADE 19"



-
- . TEE SS DARK PARADISE
 - . BOARDSHORT S ION LOGO 20"



-
- . ZIP HOODY SEVEN PALMS
 - . TEE SS LOGO
 - . BOARDSHORT S ION LOGO 20"





. TEE SS CAPSULE WMS
. HOTSHORTS TALLY CAPSULE WMS



. TEE SS 7PALMS WMS
. ZIP HOODY KEEPERS OF STOKE
. HOTSHORTS TALLY WMS



. TANK ION MAIDEN WMS
. VOLLEY SHORTS WMS



. HOODY LOGO WMS
. BOARDSHORTS MANDIRI WMS





. TEE SS GLAMOROUS WMS
. HOTSHORTS TALLY WMS



. SWEATER THUNDER IN PARADISE
. HOTSHORT S TALLY WMS



. TANK ION MAIDEN WMS
. VOLLEYSHORT S WMS



. TEE SS THUNDER IN PARADISE
. ZIP HOODY KEEPERS OF STOKE
. VOLLEY SHORT S WMS









ION-PRODUCTS.COM