

2020



WATER

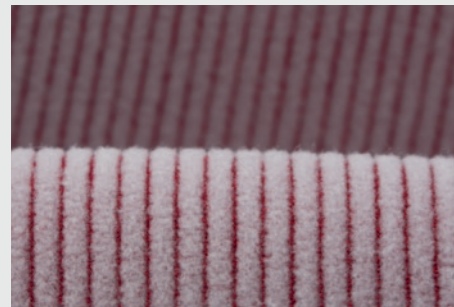
WHAT'S NEW

SURFING ELEMENTS



WETSUITS

SELECT	AMP	CORE	ELEMENT
			
<ul style="list-style-type: none"> • Large area of Plasma_Plush 2.0 for best possible heat retention and a fast drying suit • Silk_Stuff in sleeves for high comfort level and more flexibility 	<ul style="list-style-type: none"> • Quick drying Plasma_Plush 2.0 on back panel against windchill • Hot_Stuff 2.0 on body and legs for the perfect combination of warmth and stretch • Silk_Stuff on sleeves for high comfort level and more flexibility 	<ul style="list-style-type: none"> • Hot_Stuff 2.0 for the perfect combination of warmth and stretch • Silk_Stuff on lower legs and sleeves for high comfort level 	<ul style="list-style-type: none"> • Silk_Stuff lining inside lining for a higher comfort level on the element level



PLASMA_PLUSH 2.0
Premium lining offering the best of heat retention and stretch. The high pile fabric traps air for snugly warmth and isolation while the vertically aligned channel structure transports moisture away quickly – for a dry suit after your break in between sessions.



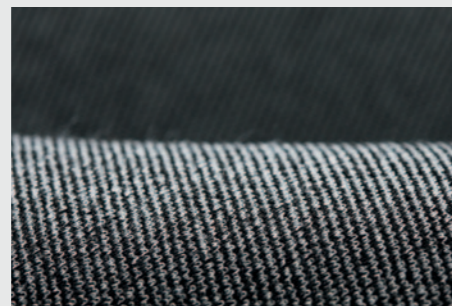
HOT_STUFF 2.0
Hot_Stuff 2.0 thermo inside lining provides more stretch and heat insulation and more comfort and a plushier hand feel through bigger loops. Hot_Stuff 2.0 is one of the stretchiest linings in the world of wetsuits.



CORDLOCK
Let's get down to the nitty-gritty details. A soft cord lock for front zip wetsuits that can be adjusted with only one hand. Additionally, it comes in an inconspicuous fashion that won't bother you while riding.



DRYGRID
Leave the water at its rightful place down below, not in your wetsuit – Drygrid absorbs up to 30% less water. As a result, the wetsuit is lighter and cooling by evaporation is reduced. Last but not least the look of the Drygrid contributes to the sophisticated detailing.



SILK_STUFF
Smooth inside lining for a comfortable feeling on bare skin. Despite its snugly appearance it proves to be really hardcore when it comes to the interior's superb flexible characteristics.



MAKI_TAPE 2.0
Highly elastic neoprene tape reinforces the seams on the lower body and mostly stressed cuff area from the inside.



CAPSULE MEN



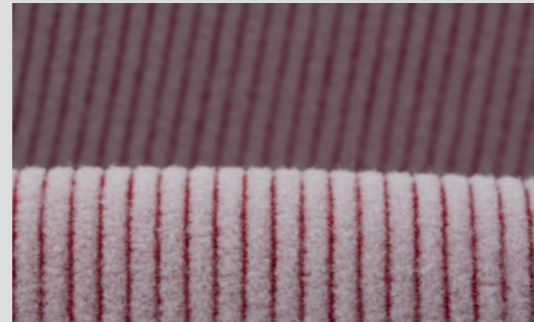
CAPSULE WOMEN



SHOES | GLOVES



BALLISTIC RANGE



NOW WITH PLASMA_PLUSH 2.0



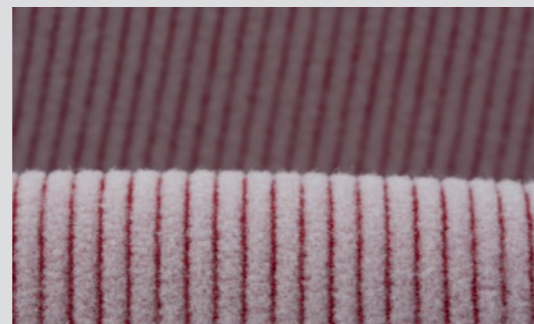
MAGMA RANGE



NOW WITH HOT_STUFF 2.0



NEO GLOVES



NOW WITH PLASMA_PLUSH 2.0

VESTS | TRANSITION TEC



COLLISION VEST CORE
FRONTZIP FOR EASY ENTRY



LONG JOHN 2.5
NOW WITH SAME STRETCH AS CORE LEVEL



MONOSHORTY 2.0 DL | 0.5 DL
NOW WITH SAME STRETCH AS CORE LEVEL

SELECT CURV HARNESSSES

ULTRA LIGHTWEIGHT



TOTAL WEIGHT: 1350 g = -24% COMPARED 2019

. 3D_PLUS SPINE . METAL DOUBLE_D BUCKLE . HYPER_FOAM . INTERNAL FLEX BELT (ONLY KITE HARNESSSES: KITEKNIFE 2.0 MULTITOOL . HPL_SLIDER)

APEX CURV 13 SELECT



CURV

Completely molded CURV composite material with strong Back support and flexible sideparts



INSIDE EVA

Inside EVA prevents the harness from slipping.



C-BAR 3.0

Fiber reinforced injection material with a modular exchangeable aluminum hook and Dynema webbing (rope). Tension lever tightens the harness without changing the buckle settings.



ULTRA LIGHTWEIGHT

Thanks to its light construction combined with a clever mix of materials, this harness ranks as the most durable and lightweight hard shell on the market.

RIOT CURV 14 SELECT



NOVA CURV 10 SELECT



RADIUM CURV 13 SELECT



ICON CURV 14 SELECT



CURV HARNESSSES

LIGHTWEIGHT



TOTAL WEIGHT: 1590 g = -9% COMPARED 2019

. 3D_PLUS SPINE . C_30 BUCKLE . HYPER_FOAM . NEOPRENE BELT (ONLY KITE HARNESSSES: KITEKNIFE 2.0 MULTITOOL . HPL_SLIDER)

APEX CURV 13



CURV

Completely molded CURV composite material with strong Back support and flexible sideparts



INSIDE EVA

Inside EVA prevents the harness from slipping.



C_BAR

Fiber reinforced injection material with a modular exchangeable metal hook. The tension lever tightens the harness without changing the buckle settings.



LIGHTWEIGHT

Light but durable construction combined with a clever mix of materials.

RIOT CURV 14



NOVA CURV 10



RADIUM CURV 13



ICON CURV 14



HARNESSES

C_BAR 3.0



Comfort, lightweight, and a sleek design – the C_Bar 3.0 unites all these advanced features into a single piece. Fiber reinforced injection material with a modular exchangeable aluminum hook and Dynema webbing (rope). The tension lever tightens the harness without changing the buckle settings.



C_30 BUCKLE



Easy to handle carbon adjustment of the spreader bar webbings with a pleasantly light weight.

METAL DOUBLE_D_BUCKLE



Ultralight and rigid Double_D closing system allows a quick and perfect adjustment of the spreader bar webbings. This system has already proven itself in various sports items like climbing gear or helmets.

TRAVEL | PROTECT

TEC BOARDBAGS IMPROVED FEATURES AND DETAILS

- _ASYMMETRICAL ZIPPER
- _BELT STORAGE
- _ACCESSORY POCKET
- _ZIPPER RAIL GUARD

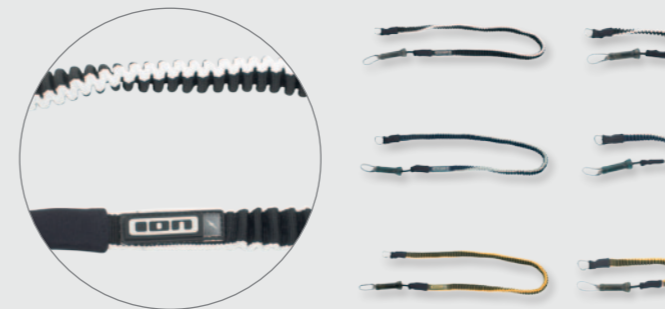


TEC GEARBAGS IMPROVED FEATURES AND DETAILS

- _CURV PLATE
- _ACCESSORY POCKET



HANDLEPASS LEASHES - WEBBING NEW WEBBING CONSTRUCTION



UPHAULS - WEBBING NEW WEBBING CONSTRUCTION



HARDCAP 3.2 SELECT NEW COLOURS RANGE AND FINISHING



HARDCAP 3.2 COMFORT NEW COLOURS RANGE AND FINISHING



ION-PRODUCTS.COM